



# EXO series USB3

## Manual

exo174, exo249, exo252, exo265, exo4000, exo250, exo264, exo428, exo255, exo267, exo253, exo304, exo542, exo387, exo367, exo183, exo541, exo540, exo342, exo387TR, exo367TR, exo183TR, exo250Z, exo264Z, exo253Z, exo901, exo902, exo990

# Content

<b>General information</b>	<b>9</b>
1.1 Company information	9
1.1.1 Disclaimer	9
1.1.2 Copyright notice	9
1.2 Legal information	10
1.2.1 Registered trademarks	10
1.2.2 Conformity and use	10
1.2.3 Rules and regulations for USA and Canada	11
1.2.4 Rules and regulations for Europe	11
1.2.5 Warranty and non-warranty clause	11
1.3 Supplements	12
1.4 Tips and notes	12
1.5 Support	13
<b>The EXO camera series</b>	<b>15</b>
2.1 USB 3.x Vision features	15
2.2 4I/O adds light and functionality	16
2.3 Lens control	17
2.3.1 The Tracer adds dynamic lens control	17
2.3.2 Use of Varioptic liquid lenses	18
2.3.3 Use of Canon lenses	19
<b>Connectors</b>	<b>20</b>
3.1 USB3 Vision	20
3.2 Hirose I/O connector	20
<b>Getting started</b>	<b>22</b>
4.1 Find camera specs	22
4.2 Power safety	22
4.3 Connect the camera	23
4.4 Cooling	23

4.5	Camera status LED codes .....	24
<b>Feature description .....</b>		<b>26</b>
5.1	Basic features .....	26
5.1.1	Gain .....	26
5.1.2	Resolution .....	27
5.1.3	Offset .....	27
5.1.4	Color .....	28
5.1.5	Image flipping .....	30
5.1.6	Binning .....	32
5.1.7	Decimation .....	34
5.1.8	GenICam .....	35
5.1.9	Trigger modes .....	36
5.1.10	Shutter modes .....	38
5.1.11	Exposure .....	42
5.1.12	Exposure speed .....	42
5.1.13	Auto exposure .....	43
5.1.14	Acquisition and processing time .....	44
5.1.15	Bit depth .....	44
5.1.16	Polarized sensor .....	45
5.2	Camera features .....	49
5.2.1	IR / glass filter .....	49
5.2.2	Shading correction .....	50
5.2.3	Defect pixel correction .....	55
5.2.4	Look-up table .....	60
5.2.5	ROI / AOI .....	63
5.2.6	Basic capture modes .....	64
5.2.7	Micro Four Thirds lenses .....	65
5.2.8	Read-out control .....	66
5.2.9	Temperature sensor .....	66
5.2.10	System clock frequency .....	67
5.2.11	Pixel clock frequency selection .....	67
5.2.12	Predefined configurations (user sets) .....	67
5.3	I/O Features .....	68
5.3.1	Pulse width modulation .....	69
5.3.2	LED strobe control .....	71
5.3.3	Sequencer .....	74
5.3.4	Optical input .....	77

5.3.5	PLC / Logical operation on inputs .....	78
5.3.6	Serial data interfaces .....	79
5.3.7	Trigger-edge sensitivity .....	81
5.3.8	Debouncing trigger signals .....	82
5.3.9	Prescale .....	83
<b>Annex .....</b>		<b>85</b>
6.1	Dimensions .....	85
6.2	I/O driver circuit schematics .....	85
6.3	Action commands .....	86
6.4	FAQ .....	87

# List of figures

Fig. 2-1: Illustration of 4I/O concept of switching LEDs	16
Fig. 3-1: I/O Hirose connector layout	21
Fig. 4-1: Camera mounted to a heat sink (example)	24
Fig. 4-2: Camera status LED codes, from firmware b2901 onward	25
Fig. 4-3: Camera status LED codes, before firmware b2901	25
Fig. 5-1: Noise caused by too much gain	27
Fig. 5-2: Dark noise cut off by the offset	28
Fig. 5-3: Example of Bayer pattern (source: wikipedia)	28
Fig. 5-4: Original image	31
Fig. 5-5: Horizontal flip	31
Fig. 5-6: Vertical flip	32
Fig. 5-7: Vertical binning	33
Fig. 5-8: Horizontal binning	33
Fig. 5-9: 2x2 binning	34
Fig. 5-10: Horizontal decimation	34
Fig. 5-11: Vertical decimation	35
Fig. 5-12: Mode 2: External trigger with programmable exposure time (overlap)	36
Fig. 5-13: Mode 2: External trigger with programmable exposure time (non overlap)	37
Fig. 5-14: Mode 1: External trigger with pulse width exposure control (overlap)	37
Fig. 5-15: Mode 1: External trigger with pulse width exposure control (non-overlap)	37
Fig. 5-16: Mode 1: External trigger with programmable exposure time (overlap)	38
Fig. 5-17: Mode 1: External trigger with programmable exposure time (non-overlap)	38
Fig. 5-18: Flash control with rolling shutter	40
Fig. 5-19: Rolling shutter lines light sensitivity versus time	41
Fig. 5-20: Acquisition and processing time	44
Fig. 5-21: Light polarization	45
Fig. 5-22: Polarization filters	47
Fig. 5-23: Polarization angle	48
Fig. 5-24: IR cut filter light transmission	50
Fig. 5-25: Original and shading corrected image	51

Fig. 5-26: Shading control disabled	53
Fig. 5-27: Illustration of a defect pixel	56
Fig. 5-28: Custom LUT adding contrast to the mid-tones	60
Fig. 5-29: Several gamma curves comparable to a LUT	61
Fig. 5-30: Several gamma curves comparable to a LUT	62
Fig. 5-31: AOI on area sensor	63
Fig. 5-32: Mode 0 - Free running with programmable exposure time	64
Fig. 5-33: Mode 1: External Trigger with Pulse Width Exposure Control (overlap)	65
Fig. 5-34: Basic capture modes - triggered mode (pulse width without overlap)	65
Fig. 5-35: Illustration of physical data stream in time	66
Fig. 5-36: PWM intensity	70
Fig. 5-37: Example: 25% PWM load	70
Fig. 5-38: Example: 50% PWM load	71
Fig. 5-39: Example: 75% PWM load	71
Fig. 5-40: The PWM module	71
Fig. 5-41: Attach LED lights to camera outputs	72
Fig. 5-42: Sequencer timing diagram	77
Fig. 5-43: Optical input	78
Fig. 5-44: UART encoding of a data stream	80
Fig. 5-45: Schmitt trigger noise suppression	81
Fig. 5-46: Bounces or glitches caused by a switch	82
Fig. 5-47: Debouncer between the trigger source and trigger	82
Fig. 5-48: The debouncer module	83
Fig. 5-49: Prescale values and their result on trigger signal	84
Fig. 5-50: The prescale module	84
Fig. 6-1: I/O driver circuit schematics	85
Fig. 6-2: Action control	86

# List of tables

Table: 3-1: Hirose connector types	21
Table: 5-1: Table of dB and corresponding ISO value	26
Table: 5-2: ROI sizes	63
Table: 5-3: LEDs in continuous mode	73
Table: 5-4: Example Calculation "No Flash" (CW Mode)	73
Table: 5-5: Truth table of logic function	79

Table: 5-6: Serial interface parameters – RS-232 and RS-422	79
Table: 6-1: Examples of GroupMask	86
Table: 6-2: Example of action command	87





# General information

## 1.1 Company information

Allied Vision Gilching GmbH

Ferdinand-Porsche-Str. 3

82205 Gilching

Germany

Tel.: +49 8105 3987-60

Fax: +49 8105 3987-699

Mail: [info@alliedvision.com](mailto:info@alliedvision.com)

Web: [www.alliedvision.com](http://www.alliedvision.com)

### 1.1.1 Disclaimer

This manual contains important instructions for safe and efficient handling of our products. This manual is part of the product and must be kept accessible in the immediate vicinity of the product for any person working on or with this product .

Read carefully and make sure you understand this manual prior to starting any work with this product. The basic prerequisite for safe work is compliant with all specified safety and handling instructions.

Accident prevention guidelines and general safety regulations should be applied.

Illustrations in this manual are provided for basic understanding and can vary from the actual model of this product. No claims can be derived from the illustrations in this manual.

The product has been produced with care and has been thoroughly tested. In case of any complaint, contact your local Allied Vision distributor. You will find a list of distributors in your area on [Allied Vision Distributors](#)

### 1.1.2 Copyright notice

Forwarding and duplicating of this document, as well as using or revealing its contents are prohibited without written approval. All rights reserved with regard to patent claims or submission of design or utility patent.

The specification is subject to change without notice in advance. The brand and product names are trademarks of their respective companies. Any configuration other than original product specification is not guaranteed.

## 1.2 Legal information

Errors and omissions excepted.

These products are designed for industrial applications only. Cameras from Allied Vision Gilching GmbH are not designed for life support systems where malfunction of the products might result in any risk of personal harm or injury. Customers, integrators and end users of Allied Vision Gilching GmbH products might sell these products and agree to do so at their own risk, as Allied Vision Gilching GmbH will not take any liability for any damage from improper use or sale.

### 1.2.1 Registered trademarks

In this manual the following registered trademarks may be used:

- GenICam®
- Microsoft® and Windows®
- Intel®

Throughout the manual, these trademarks are not specifically marked as registered trademarks. This in no way implies that these trademarks can be used in another context without the trademark sign.

### 1.2.2 Conformity and use

This equipment has been tested and found to comply with the limits for a Class A digital device, pursuant to Part 15 of the FCC Rules. These requirements are designed to provide reasonable protection against harmful interference when the equipment is operated in a commercial environment.

This equipment generates, uses, and can radiate radio frequency energy and, if not installed and used in accordance with the instructions given in this guide, may cause harmful interference to radio communications. Operation of this equipment in a residential area is likely to cause harmful interference in which case the user will have to correct the interference at its own expense.

You are herewith cautioned that any changes or modifications not expressly approved in this description could void your authority to operate this equipment.

### 1.2.3

#### Rules and regulations for USA and Canada

This device complies with part 15 of the FCC Rules. Operation is subject to the following conditions: (1) This device may not cause harmful interference, and (2) this device must accept any interference received, including interference that may cause undesired operation.

This equipment is compliant with Class A of CISPR 32. In a residential environment this equipment may cause radio interference.

This equipment has been tested and found to comply with the limits for a Class A digital device, pursuant to part 15 of the FCC rules.

It is necessary to use a shielded power supply cable. You can then use the "shield contact" on the connector which has GND contact to the device housing. This is essential for any use. If not done and the device is destroyed due to Radio Magnetic Interference (RMI) WARRANTY is void!

- Power: US/UK and European line adapter can be delivered. Otherwise use filtered and stabilized DC power supply.
- Shock & vibration resistance is tested. For detailed specifications refer to the section on specifications.

### 1.2.4

#### Rules and regulations for Europe

This device is CE tested, the following rules apply:

- EN 55032:2015
- EN 61000-6-2:2019

The product is in compliance with the requirements of the following European directives:

- 2011/65/EU
- 2015/863/EU

All products of Allied Vision Gilching GmbH comply with the recommendation of the European Union concerning RoHS rules.

### 1.2.5

#### Warranty and non-warranty clause

The camera does not contain serviceable parts. Do not open the body of the camera. If the camera has been opened, the warranty will be void.

The camera has to be used with a supply voltage according to the camera's specification. Connecting a lower or higher supply voltage, AC voltage, reversal polarity or using wrong pins of the power connector may damage the camera. Doing so will void warranty.

Our warranty does not protect against accidental damage, loss, or acts of nature.

Allied Vision Gilching GmbH cannot be held responsible for the loss of data. We recommend a backup plan.

## 1.3 Supplements

### **FOR CUSTOMERS IN CANADA**

This apparatus complies with the Class A limits for radio noise emissions set out in Radio Interference Regulations.

### **POUR LES UTILISATEURS AU CANADA**

Cet appareil est conforme aux normes Classe A pour bruits radioélectriques, spécifiées dans le Règlement sur le brouillage radioélectrique.

### **LIFE SUPPORT APPLICATIONS**

The products described in this manual are not designed for use in life support appliances or devices and systems where malfunction of these products can reasonably be expected to result in personal injury.

Allied Vision Gilching GmbH customers using or selling these products for use in such applications do so at their own risk and agree to fully indemnify Allied Vision Gilching GmbH for any damages resulting from such improper use or sale.

## 1.4 Tips and notes

This manual contains notes that help to avoid data loss or camera damage, and tips that provide information to improve handling the camera. They are marked as follows:

### **TIPS**

Provides information that may help to improve camera handling or avoid data loss.

## NOTES

Provides information to avoid damage to the system.

# 1.5 Support

In case of issues with the camera we are happy to help. For being able to help you in a fast and efficient way, we ask you for a description of the issues using camera in your support request.

1. Put your support request to us via the support form: [Support & Repair \(RMA\)](#)
2. Fill the form with information about the camera model, the frame grabber model, and operating system. Our support team will come back to you.



# The EXO camera series

**The EXO camera series** is a series of machine vision cameras for the low and mid-range resolutions up to 20 MP. The EXO is available with different industry standard interfaces such as GigE Vision, Camera Link and USB3 Vision.

The EXO is easy to integrate and comes with a full package of useful hardware features.

The EXO-Series comes in a new 50 x 50 mm aluminum body. The elaborate, high precision machined unibody housing ensures perfect temperature distribution even for the most demanding sensors. A massive lens mount is designed to keep any kind of lens in its proper position. The electric circuitry of the EXO is optimized for low power dissipation, helped by the excellent temperature performance of the housing. The EXO features the latest global shutter CMOS and CCD sensors from SONY, CMOSIS and ON Semi.

A uniform form factor and identical standard interface connectors with identical pinout facilitate camera model interchangeability, allowing system integrators to adapt applications with varying conditions and requirements very quickly with minimum design effort.

## 2.1



## USB 3.x Vision features

USB 3.0, the extensively revised, third Universal Serial Bus (USB) version has been renamed USB 3.1 Gen 1 by the USB-IF (USB Implementers Forum). However, the technical specifications remained unchanged. USB 3.1 Gen 1 (USB 3.0) offers the same user-friendly plug-and-play technology as previous USB generations, but with 10 times the performance and better power management.

The performance increase is based on USB 3.1 technology, which allows multiple data streams to be transferred simultaneously - with a maximum 5 Gbps signal bandwidth, compared to 480 MB/s with USB 2.0. Although the specifications are 5 Gbps, transfer rates may vary depending on the controller, cable quality and -length as well on controller configuration.

USB 3 Vision is one of the most flexible and scalable camera protocols for the industrial market segment. The USB 3 Vision interface is easy to integrate in your system, with a data rate up to effective 350 MB/sec. USB3 powers the camera via the interface cable and reduces cable complexity.

- Up to 620 MB/sec brutto transfer rate
- Leverages existing infrastructure for cables and connectors
- GenICam compliant
- Cost effective / easy implementation and interfacing

USB 3.1 Gen 1 can transfer 5 Gbps, USB 3.1 Gen 2 can transfer up to 10 Gbps.

To compensate any USB 3 hardware not able to cope with high data rates, an integrated hardware buffer in the Allied Vision Allied Vision Gilching GmbH camera will try to catch and buffer these cases. The SVCapture GUI will show the real data rate of successful transfers. If you encounter image losses, run the same camera task with different USB chip-sets and / or processor.

- Use a dedicated USB 3 port at your computer
- Do not use USB 3 hubs for your image USB stream
- In case of image drops, try different hardware or reduce frame rate
- If the client hardware (processing load) is too slow, the above is valid as well.

## 2.2 4I/O adds light and functionality

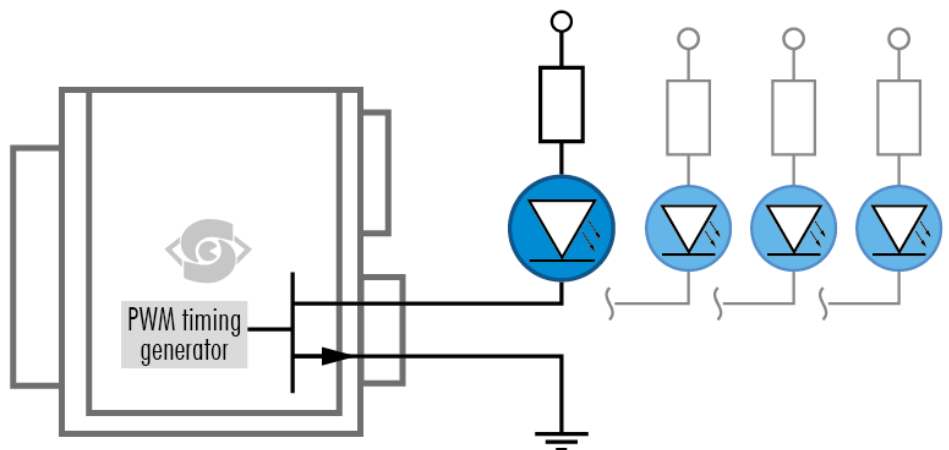


Fig. 2-1: Illustration of 4I/O concept of switching LEDs

The camera is equipped with the 4I/O-interface allowing full light control, replacing external strobe controllers. Each of the outputs can be individually configured and managed using pulse width modulation. With its high current output, the camera is able to drive LED lights directly without external light controller.

The integrated sequencer allows multiple exposures with settings to be programmed. Logical functions like AND / OR are supported.

- Up to 4 x open drain high power OUT
- Up to 4 x high voltage IN – TTL up to 25 Volts



- Power MOSFET transistors
- PWM strobe control
- Sequencer for various configurations
- PLC functionality with AND, OR and timers
- Safe trigger (debouncer, prescaler, high low trigger)

## 2.3 Lens control

Various SVCam models are supporting adjustable lenses. Focus and iris of the lens can be controlled from within the camera GenICam tree. Depending on the camera series, a special Y-cable is required, contact [Allied Vision](#).

The following variable lens types are supported:

- MFT (Micro Four Thirds) lenses (in Tracer series) have full support of lens focus, iris and zoom. Only available in Tracer models no options selectable in GenICam tree.
- Birger mount: Ask [Allied Vision](#) for information of usability and restrictions of the Birger adapter.
- Varioptic liquid lens: Control of extremely fast focus cycles. Make sure sensor diameter is covered by lens.
- Canon EF/EF-S lens: Focus and iris control is supported. Use Canon lenses with machine vision applications. The SVCam-EF lens adapter can be acquired from Allied Vision.

Lens control (except MFT) will make use of the serial ports of the Hirose connector.

### 2.3.1 The Tracer adds dynamic lens control

This section applies to the Tracer models (with “TR” in its type name like the EXO304MGETR)

The increasing usage of machine vision in various branches such as agriculture or packaging and tracking puts new challenges to the manufacturers of machine vision applications. Very often varying distances and difficult light conditions make it a hard job to integrate machine vision into an industrial work flow. Allied Vision pioneered the use of variable focus lenses into machine vision.

## TRACER WITH MICRO FOUR THIRDS MOUNT

The Tracer accepts this new challenge with a full blown dynamic lens functionality. Equipped with the well known MFT (Micro Four Thirds) bayonet, the Tracer supports

- Adjustable focus
- Adjustable zoom
- Adjustable aperture

With this feature set, the Tracer is able to focus extremely fast on various distances and can do closeups without loss of resolution. With zoom being relatively slow, aperture and focus adjustment in most cases is done within 10-20 ms (depending on the lens).

All of these functions can be accessed in the application by the camera programming interface or via GenICam properties. This makes integration of dynamic lens control into third party software possible with no effort. Power supply and data control for the lens are done through the MFT bayonet, so no external cables are visible.



The MFT lenses are optically optimized for sensors up to 1.3", perfectly suited for machine vision sensors. The optical construction defined by the MicroFourThirds consortium, telecentric on the sensor side, provides smooth images and very low shading. Mechanically built on magnetic rails in most cases, the stability and repeatability of the lenses is surprisingly high. A wide selection of suitable lenses for any application is available. As a surplus, MFT lenses provide excellent optical performance regarding their price tag.

MFT lenses should have a small dot on the case, indicating the position to attach it to the camera (find the matching dot on the camera mount). Turning the lens clockwise until the lens stops with fixing click will attach it to the camera and put the contacts in proper positions. For removing the lens, press the unlock button on the lens and turn the lens counter-clockwise.

### 2.3.2

## Use of Varioptic liquid lenses

We are supporting Varioptic liquid lenses. The liquid lens support does variable focus only, zoom and aperture control are not existing with the Varioptic liquid lens. You need a special serial cable with Hirose for connecting the lens to the camera, please ask your dealer. Being extremely fast and robust, the liquid lens is best choice as long as variable focus is sufficient in the application and you do not need a full lens control with aperture control and zoom functionality. In case of full lens control requirement, please refer to the TRACER series.

The lens is powered and controlled by the camera. The lens can be controlled via SDK functions or more easily via GenICam property.

Liquid lenses do have some advantages and disadvantages compared to glass optics:

- Advantages of liquid lenses
  - Extremely robust to mechanical shock (best choice for fast moving robotics) and acceleration
  - Fast focus (often significantly faster than 10 ms under common conditions)
- Disadvantages of liquid lenses
  - Limited resolution
  - High chromatic aberration
  - Any acceleration (gravitational as well as acceleration from movement) might increase spherical aberration as long as the force is working (will disappear if force has ceased within several 10 ms)

### 2.3.3

#### Use of Canon lenses

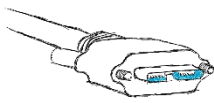
We are supporting Canon EF lenses. The SVCam-EF lens adapter gives you the possibility to mount Canon EF lenses with full control of focus and iris. Canon lenses are well known for their optical excellence and combine perfectly to high resolution machine vision cameras.

This camera series does have the firmware support already included in the GenICam tree and provides you with Canon lens control in all GenICam based software packages.

# Connectors

Cameras from Allied Vision feature a combined I/O and power supply connector (Hirose) and a data connector.

## 3.1



## USB3 Vision

The USB3 Vision interface is based on the standard USB 3.1 Gen 1 interface and complies with USB3 Vision standard.

The connector type is USB 3.0 micro B. The camera is prepared for screwable versions of the connector.

Use of the integrated strobe controller requires power supply via Hirose adapter.

SVCam USB3 cameras with CCD sensors (e.g. exo814) cannot be powered via USB connector. They require power supply with Hirose connector.

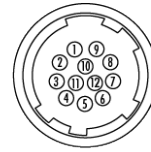
## 3.2

## Hirose I/O connector

The Hirose™ connector provides power, input and output signal access.

Maximum power output is max. 2 A.

## Hirose Pinout



Pin	Signal ECO, ECO2, EVO, HR (CL medium, GigE only)	Signal EXO, FXO, HR (CL De., CXP), SHR	Signal 4 I/O for option ECO
1	V IN- (GND)	V IN- (GND)	V IN- (GND)
2	V IN+ (10 – 25V)	V IN+ (10 – 25V)	V IN+ (10 – 25V)
3	RxD (RS232) not available for PoE versions	IN 4 RxD (RS232)	not connected
4	TxD (RS232) not available for PoE versions	OUT 4 TxD (RS232)	not connected
5	IN 1 (0 – 24 V)	IN 1 (0 – 24 V)	IN 1 (0 – 24 V)
6	IN 2 (0 – 24 V)	IN 2 (0 – 24 V)	IN 2 (0 – 24 V)
7	OUT 1 (open drain)	OUT 1 (open drain)	OUT 1 (open drain)
8	OUT 2 (open drain)	OUT 2 (open drain)	OUT 2 (open drain)
9	IN 3+ (RS422)	IN 3+ (opto IN +)	IN 3 (0 – 24 V)
10	IN 3– (RS422)	IN 3– (opto IN –)	IN 4 (0 – 24 V)
11	OUT 3+ (RS422)	OUT 3 (open drain)	OUT 3 (open drain)
12	OUT 3– (RS422)	OUT 0 (open drain)	OUT 4 (open drain)
	Shielding	Shielding	Shielding

Fig. 3-1: I/O Hirose connector layout

Inputs and outputs connect via in the GenICam software tree to the appropriate actions (also refer to ["Assigning I/O Lines – IOMUX" on page 1](#)).

For detailed information about switching lights with the power outputs via GenICam, refer to ["LED strobe control" on page 71](#).

Type	HR10A-10R-12P
Matching connector	HR10A-10P-12S

Table: 3-1: Hirose connector types

# Getting started

## 4.1 Find camera specs

For technical data sheets visit [FAQs und Application Notes](#).

Search for a specific camera, using series and model name or by using the SVCam camera finder. The details and download section provides you with manuals, drawings, as well as software and firmware.

## 4.2 Power safety

For safety reasons, for protection of the camera and users, use certified power supplies (Low power supply according IEC 62368-1) only. Refer to specifications for your camera model. Appropriate power supplies can be ordered at Allied Vision Gilching GmbH.

The camera does not have a power switch. The camera is powered on as soon power is available to the camera. This might happen via the Hirose connector or (in case of USB or CoaXPress) through the interface cables.

For making sure the camera is not connected to power

- Disconnect Hirose (or M12) plug from camera
- If the camera interface is USB or CoaXPress, disconnect interface connector from the camera
- Disconnect power plug from power AC wall outlet to disable the DC power supply as well.

The power supply must be easily accessible at all times! For Power specs, refer to the data sheet of your model.

Before connecting your camera to power, make sure your data cable is connected properly. Always connect data cable before power.

## 4.3

# Connect the camera

When using your own power supply (voltage range 10...25 V DC), see also Hirose 12-pin layout of the power connector (see "[Hirose I/O connector](#)" on page 20). For power input specifications refer to the technical data information on our website.

The external power on the Hirose connector is the preferred power source.

Camera power supply is not powering 4I/O LED lights.

### CONNECTING THE CAMERA

The camera does not have a power switch. The camera is powered on as soon power is available to the camera via the Hirose connector or through the interface cables.

- Connect the power supply with the Hirose connector.

### DISCONNECTING THE CAMERA

For making sure the camera is not connected to power

- Disconnect Hirose plug from camera
- Disconnect power plug from power AC wall outlet to disable the DC power supply.

## 4.4

# Cooling

During operation, the heat from the camera's sensor dissipates to the housing. To maintain reliable performance, it is crucial to adhere to the operating temperature range specified in the camera's technical data.

- Install the camera so that the housing openings at the back or at the sides are not blocked and ventilation is possible under all operating conditions.
- Check the unhindered air flow after installation of surrounding components such as cables.

## ADDITIONAL COOLING

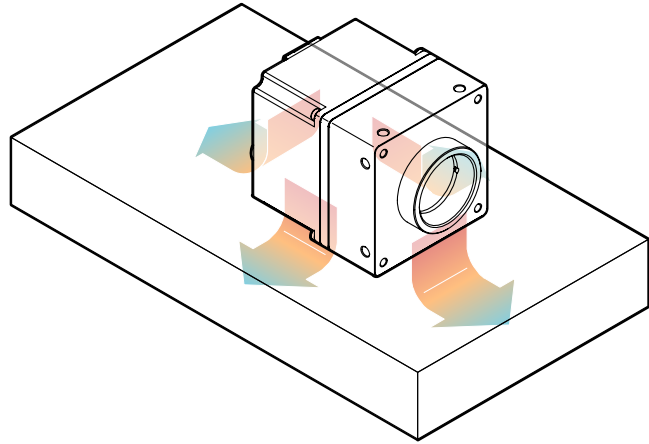


Fig. 4-1: Camera mounted to a heat sink (example)

If the temperature consistently exceeds the maximum operating temperature specified for the camera, additional cooling measures are necessary. This can be achieved by:

- Mounting the camera housing to a heat sink or other heat-dissipating material. For optimal cooling efficiency, ensure that the contact area between the camera housing and the cooling material is as large as possible, allowing for better heat transfer.  
In addition, vibrations will be minimized within the entire system.
- If available, activating the built-in fan or adjust the fan control threshold.
- If available, activating the built-in thermoelectric cooling feature.
- Using an air- or water-cooling system.

Even if the housing temperature remains below the maximum operating temperature, using additional cooling is recommended to ensure optimal image quality and power efficiency.

## 4.5 Camera status LED codes

On power up, the camera will indicate its current status with a flashing LED on its back. The LED will change color and rhythm.

The meaning of the blinking codes translates as follows (current, starting with firmware version b2901):








LED status code	Indication
	USB cable attached
	connected to USB driver
	connected to system
	acquisition start
	acquisition stop

Fig. 4-2: Camera status LED codes, from firmware b2901 onward

On older firmware versions (before firmware version b2901) the connect indicator was green:






LED status code	Indication
	USB cable attached
	connected to USB driver
	connected to system
	acquisition start
	acquisition stop

Fig. 4-3: Camera status LED codes, before firmware b2901

# Feature description

This chapter covers features of SVCam cameras. Not every feature might be supported by your specific camera model. For information about the features of your specific model, refer to the specifications area of our website with your exact model with our [Camera Selector](#).

## 5.1 Basic features

### 5.1.1 Gain

Setting gain above 0 dB (default) is a way to boost the signal coming from the sensor. Especially useful for low light conditions. Setting gain amplifies the signal of individual or binned pixels before the ADC. Referring to photography adding gain corresponds to increasing ISO. Increasing gain will increase noise as well.

add 6 dB	double ISO value
6 dB	400 ISO
12 dB	800 ISO
18 dB	1600 ISO
24 dB	3200 ISO

Table: 5-1: Table of dB and corresponding ISO value

Gain also amplifies the sensor's noise. Therefore, gain should be last choice for increasing image brightness. Modifying gain will not change the camera's dynamic range.

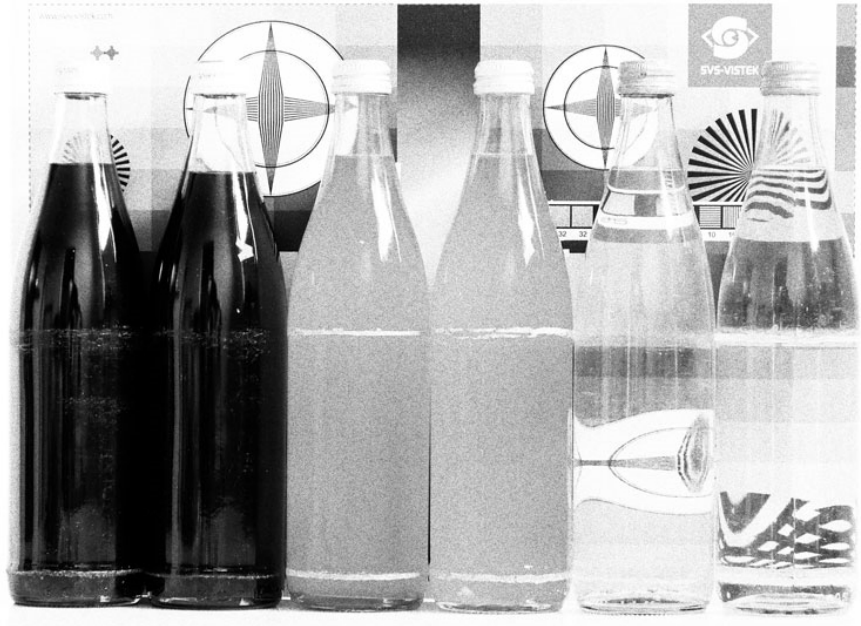


Fig. 5-1: Noise caused by too much gain

## AUTO GAIN

For automatic adjustment of gain refer to auto exposure (see ["Auto exposure" on page 43](#)).

When using auto-gain with steps of gain, the non-continuous gain adjustment might be visible in final image. Depending on your application it might be preferable to use fixed gain values instead and modify exposure with exposure time.

### 5.1.2

## Resolution

As mentioned in the specifications, there is a difference between the numerical sensor resolution and the camera resolution. Some pixels towards the borders of the sensor will be used only internally to calibrate sensor values ("Dark pixels"). The amount of dark current in these areas is used to adjust the offset (see ["Offset" on page 27](#)).

For calculating image sizes, the maximum camera resolution is determining maximum image resolution, refer to the specifications of the camera model).

### 5.1.3

## Offset

For physical reasons the output of a sensor will never be zero, even the camera is placed in total darkness or simply closed. Always there will be noise or randomly appearing electrons that will be detected as a signal (dark noise: noise generated without light exposure).

To avoid this dark noise to be interpreted as a valuable signal, an offset will be set.

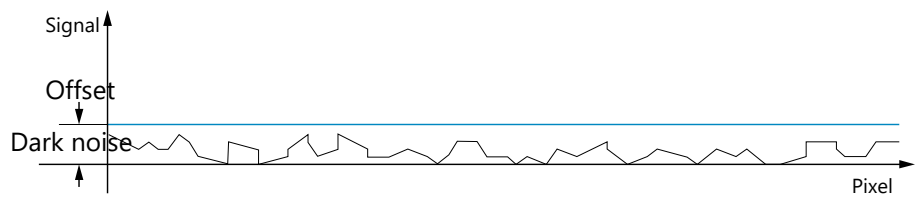


Fig. 5-2: Dark noise cut off by the offset

Most noise is proportional to temperature. The offset is automatically regulated by the camera sensor to compensate for the surrounding temperature changes by referencing specific pixels as „black“, i.e. never exposed to light. So the offset will be set dynamically and conditioned to external influences.

The offset can be limited by a maximum bit value. If higher values are needed, try to set a look up table.

For multi-tap CCD sensors, the offset can be altered for each tap separately.

## 5.1.4

### Color

Color cameras are identical to the monochrome versions. The color pixels are transferred in sequence from the camera, in the same manner as the monochrome, but considered as “raw”-format.

The camera sensor has a color mosaic filter called “Bayer” filter pattern. The pattern alternates as follows:

- First line: GRGRGR... (R=red, B=blue, G=green)
- Second line: BGBGBG...

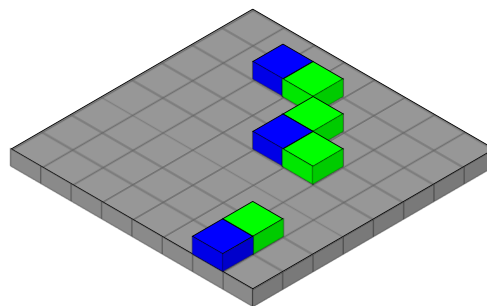


Fig. 5-3: Example of Bayer pattern (source: wikipedia)

Note that about half of the pixels are green, a quarter red and a quarter blue. This is due to the maximum sensitivity of the human eye at about 550 nm (green). De-Bayering is not done in the camera, it must be done in the client software. Not all sensors have the same sequence of color. The GenICam property **PixelColorFilter** indicates the sequence of the color pixels when reading color images.

Using color information from the neighboring pixels the RG and B values of each pixel is interpolated by software, e.g. the red pixel does not have information of green and blue components. The performance of the image depends on the software used. Due to this, physical resolution of color cameras is always lower than resolution of monochrome cameras.

Camera Link frame grabbers need information of the sequence order of the colors. The order depends on sensor type. USB3 and GigE cameras provide this in their XML file.

It is recommended to use an IR cut filter for color applications

Industrial vision cameras are not intended to display colors according to human perception.

## WHITE BALANCE

The human eye adapts to the definition of white depending on the lighting conditions. The human brain will define a surface as white, e.g. a sheet of paper, even when it is illuminated with a bluish light.

White balance of a camera does the same. It defines white or removes influences of a color-based on a non-white illumination.

- **Continuous:** Auto white balance will analyze the taken images and adjust exposure per color accordingly as long as the camera is taking images. Different colors of the same object in a sequence might be the result depending on the other objects in the image
- **Once:** Auto white balance will adjust white balance as soon it is started and will stop modifying parameters as soon white balance is finished.

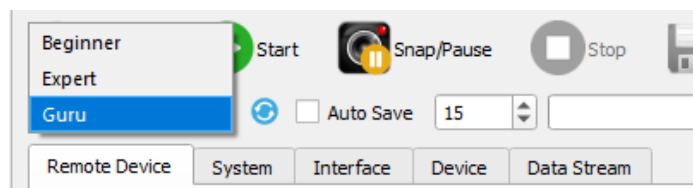
## COLOR CALIBRATION

The color cameras are delivered without color calibration.

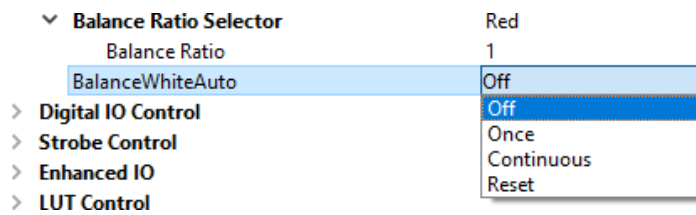
If a color calibration is necessary e.g., because the image has a green cast, the color can be adjusted with a white balance.

The feature "White Balance" is part of the camera firmware and can be operated with a GenICam compliant software.

1. When using SVCapture 2, select **Guru** as **Feature Mode**.



2. Select **BalanceWhiteAuto** in **Analog Control** in the GenICam feature tree.



The White Balance "Continuous" mode is only recommended in a slow triggered mode. Usually, it is sufficient to perform a white balance once with the given lighting.

3. Use a white, not too dark, but not overexposed surface (white wall or paper) as image. Only then the white balance algorithm can calibrate the color optimally.
4. If unsuccessful, adjust the RGB values manually e.g., by adjusting the green value downwards.
5. After calibration, save the settings in the camera (User Set Save) so that the color correction is preserved after a camera restart.
6. Use a white, not too dark, but not overexposed surface (white wall or paper) as image. Only then the white balance algorithm can calibrate the color optimally.
7. If unsuccessful, adjust the RGB values manually e.g., by adjusting the green value downwards.
8. After calibration, save the settings in the camera (User Set Save) so that the color correction is preserved after a camera restart.

### 5.1.5

## Image flipping

Images can be mirrored horizontally or vertically. Image flip is done inside the memory of the camera, therefore not increasing the CPU load of the PC.

Image flipping is referred to in the GenICam specifications and hence in the software as follows:

- Reverse X: Flips the image along the Y axis horizontally, hence "Horizontal flipping"
- Reverse Y: Flips the image along the X axis vertically, hence "Vertical flipping"



Fig. 5-4: Original image



Fig. 5-5: Horizontal flip





Fig. 5-6: Vertical flip

## 5.1.6

### Binning

Binning provides a way to enhance dynamic range, but at the cost of lower resolution. Binning combines electron charges from neighboring pixels directly on the chip, before readout.

Binning is only used with monochrome CCD sensors.

On CMOS sensors, binning will not affect image quality. In any case, binning will reduce the amount of pixel data to be transferred.

The selected binning value describes the number of combined photosensitive cells, where the following value settings apply:

- Value 1 equals the value *Binning Off* from previous versions.
- Value 2 equals the previous value *Binning On* (combination of 2 cells).
- Additionally, value 4 combines four cells horizontally or vertically.

Binning is now solely executed in the image processing chain of the FPGA and never in the sensor.

Furthermore, it is possible to set the binning mode between *Average* or *Sum*:

- Average: The response from the combined cells will be the average value (Value: 0)
- Sum: The response from the combined cells will be added (Value: 1)



### VERTICAL BINNING

Accumulates vertical pixels.

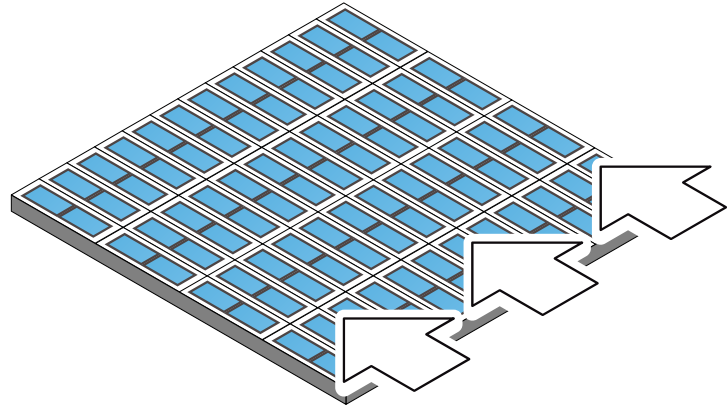


Fig. 5-7: Vertical binning

### HORIZONTAL BINNING

Accumulates horizontal pixels.

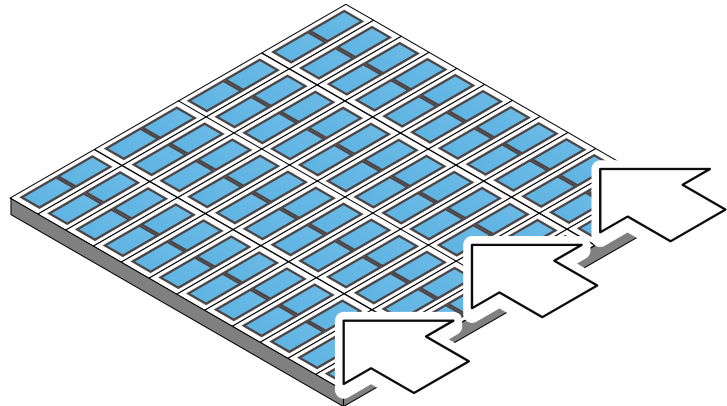


Fig. 5-8: Horizontal binning

### 2×2 BINNING

A combination of horizontal and vertical binning.

When DVAL signal is enabled only every third pixel in horizontal direction is grabbed.

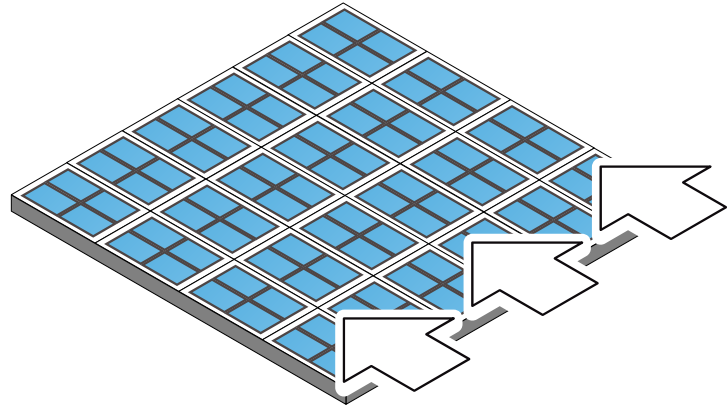


Fig. 5-9: 2x2 binning

### 5.1.7

### Decimation

For reducing width or height of an image, decimation can be used. Columns or rows can be ignored.

Refer to **"ROI / AOI"** on page 63 for reducing data rate by reducing the region you are interested in.



Fig. 5-10: Horizontal decimation



Fig. 5-11: Vertical decimation

## 5.1.8

### GenICam

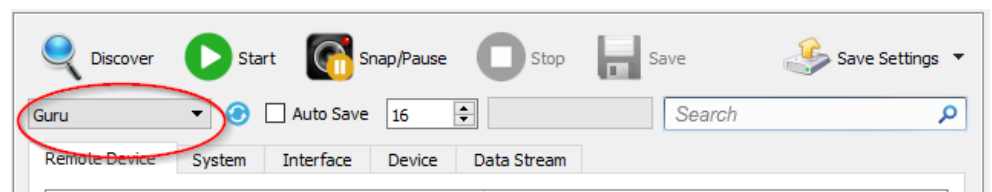
The GenICam standard provides a generic programming interface to control all kinds of cameras and devices. Regardless of the interface technology (GigE Vision, USB 3 Vision, CoaXPress, Camera Link, etc.) or implemented feature, the application programming interface (API) will always be the same. The SNFC makes sure the feature names are similar throughout the manufacturers, making it more easy to switch camera models.

The GenICam™ standard consists of multiple modules according to the main tasks to be solved:

- GenApi: configuring the camera
- SNFC: Standard Feature Naming Convention, a catalog of standardized names and types for common device features
- GenTL: transport layer interface, grabbing images
- GenCP: generic GenICam control protocol
- GenTL SFNC: recommended names and types for transport layer interface.

The GenICam properties are organized as a tree. Manufacturers can add more features.

With your SVCam, the GenICam tree does have some hardware related extensions, especially in the I/O sector. See the Quick guide install for a short introduction into the Allied Vision GenICam tree.



The GenICam properties are organized in views. The recommended way to view and adjust is by using SVCapture. If you want to have a full view of all adjustable GenICam items, activate the Guru mode. Beginner mode will show only most common attributes.

All modifications in the GenICam tree will have immediate effect.

### 5.1.9

## Trigger modes

To start capturing images, the camera has to receive a trigger signal. This trigger signal can be a software trigger, it might be an electric signal on the hardware I/O or it can be a timed trigger (sequence of images or "Precision Time Protocol").

### SOFTWARE TRIGGER

The camera exposure can be started via software. With some interface types like GigE and USB3 it is impossible to have a 100% precise software trigger. CoaXPress and Camera Link permit relatively precise triggering of the camera. If you need to have a precise trigger, usage of "External hardware trigger" on page 36 is recommended.

### EXTERNAL HARDWARE TRIGGER

External trigger with programmable exposure time. In this mode the camera is waiting for an external trigger pulse that starts integration, whereas exposure time is programmable via the serial interface and calculated by the internal microcontroller of the camera.

Default input for trigger is Input1.

At the rising edge of the trigger the camera will initiate the exposure.

The software provided by Allied Vision lets the user set exposure time e.g. from 60  $\mu$ s to 60 sec (camera type dependent).

Exposure time of the next image can overlap with the frame readout of the current image (trigger pulse occurs when FVAL is high). When this happens, the start of exposure time is synchronized to the negative edge of the LVAL signal (see figure)

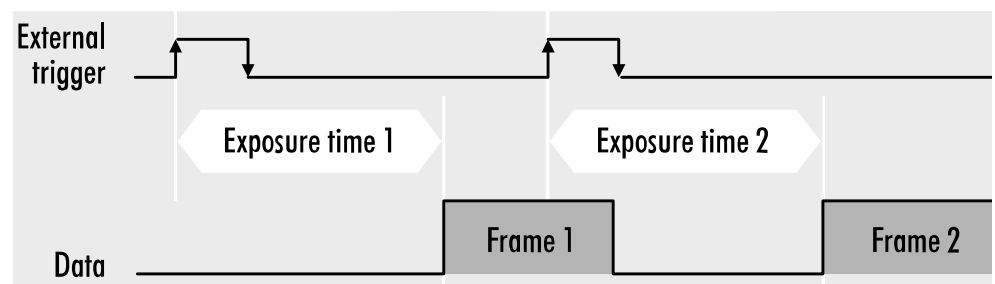


Fig. 5-12: Mode 2: External trigger with programmable exposure time (overlap)

When the rising edge of trigger signal occurs after frame readout has ended (FVAL is low), the start of exposure time is not synchronized to LVAL and exposure time starts after a short and persistent delay.

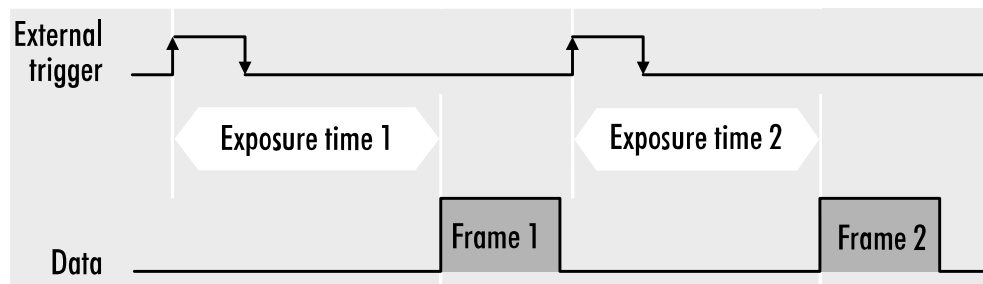


Fig. 5-13: Mode 2: External trigger with programmable exposure time (non overlap)

Exposure time can be changed during operation. No frame is distorted during switching time. If the configuration is saved to the EEPROM, the set exposure time will remain also when power is removed.

## DETAILED INFO OF EXTERNAL TRIGGER MODE

The diagrams below are identical for CCD and CMOS technique.

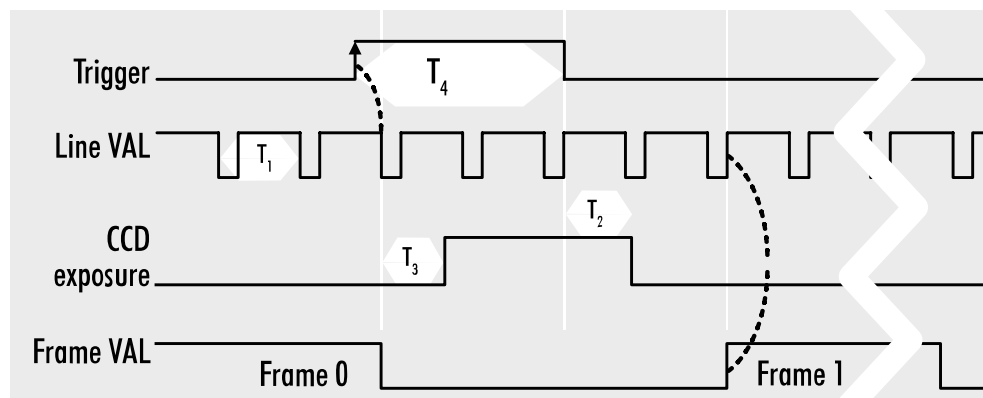


Fig. 5-14: Mode 1: External trigger with pulse width exposure control (overlap)

<b>T<sub>1</sub></b>	Line duration	<b>T<sub>2</sub></b>	Transfer delay
<b>T<sub>3</sub></b>	Exposure delay	<b>T<sub>4</sub></b>	Min. trigger pulse width

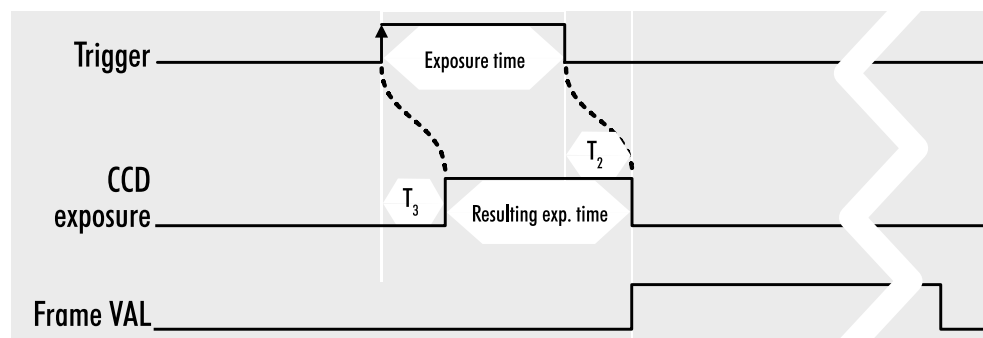


Fig. 5-15: Mode 1: External trigger with pulse width exposure control (non-overlap)

<b>T<sub>2</sub></b>	Transfer delay	<b>T<sub>3</sub></b>	Exposure delay
----------------------	----------------	----------------------	----------------

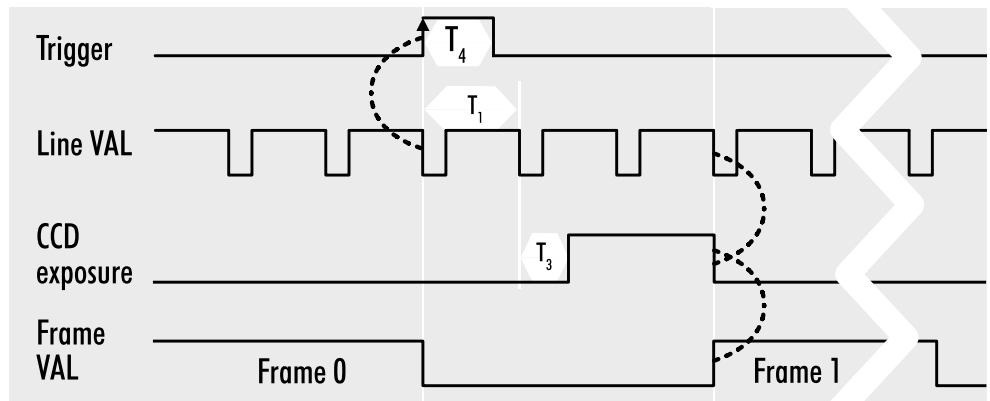


Fig. 5-16: Mode 1: External trigger with programmable exposure time (overlap)

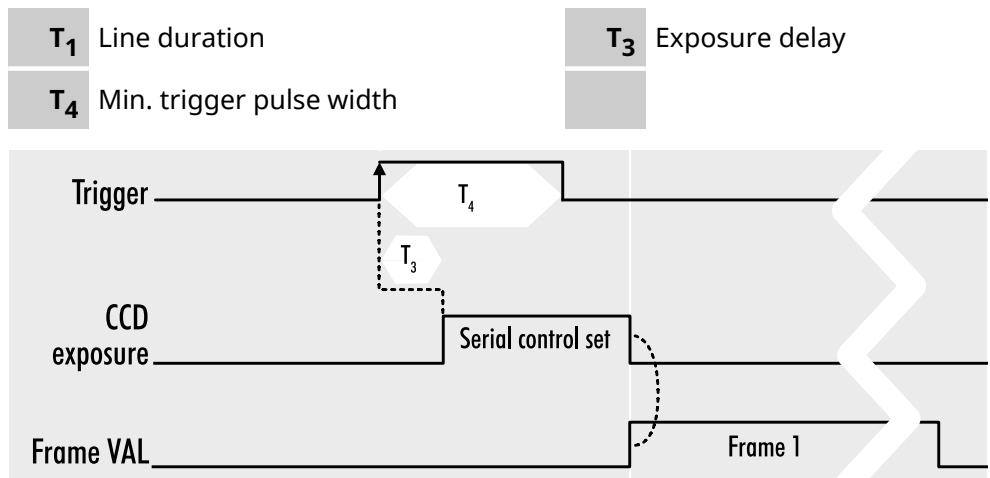


Fig. 5-17: Mode 1: External trigger with programmable exposure time (non-overlap)



### 5.1.10

## Shutter modes

CCD and CMOS area cameras consist of pixels, ordered in lines and columns. All pixel are exposed to light and then read out to camera electronics.

### GLOBAL SHUTTER MODE

- Global reset of all pixels
- All pixels start light integration at the same time
- All pixels stop integration at same time
- Readout line by line after exposure of whole frame is completed

### ROLLING SHUTTER MODE

- Pixel reset line by line
- Line by line light integration

- Integration starts with different point of time for each line
- All lines stop integration at different time
- Line readout immediately after line exposure
- Next integration has to wait for finished readout (per line)
- No external exposure control (expose while trigger signal active)

## **LIMITATIONS**

Use short exposure times for preventing blur / deforming artifacts. Image of moving object on sensor must not move more than half pixel width. In case of moving objects, exposure movement on sensor has to be shorter than half a pixel for whole image.

Make sure your light is ON as long any pixel are going to be exposed. Total imaging time is exposure time plus scanning time.

Minimum scan time in most cases is about 1 frame length.

With rolling shutter the whole sensor has to be read out – always. That means applying ROI will reduce the amount of final data being transmitted out of the camera (and the frame rate might rise, due to the limited bandwidth of the interface). Nonetheless, the maximum achievable frame rate with applied ROI will be the maximum frame rate of the sensor reading the full sensor area (internal full sensor speed), please refer to relating sensor specs.

## **ARTIFACTS**

- All pixel show same artifacts
- Deformed image of moving objects

## EXPOSURE WITH FLASH

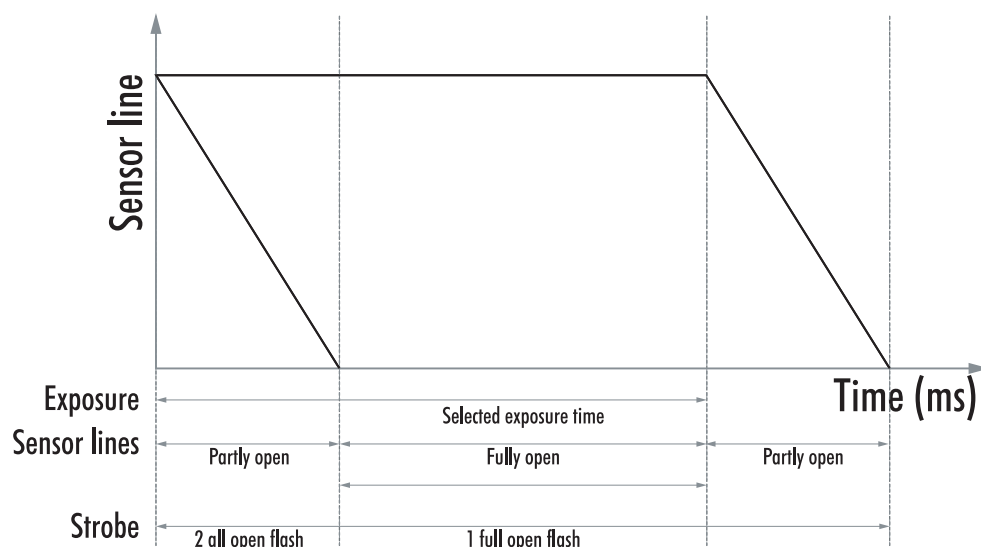


Fig. 5-18: Flash control with rolling shutter

- Flash strobe on whole exposure time
- Optionally, flash strobe only while all lines are sensitive to light at the same time (delay flash strobe until all lines are sensitive to light)

Make sure to protect from changing environment light (recommendation: flash strobe in darkness). Short Flash strobe times with moving objects.

### Light control with rolling shutter

Not all sensor lines are sensitive to light at the same time. Make sure your light is ON as long any pixel are going to be exposed. An exo183xGE i.e. needs about 62ms of minimal scanning time. An exo183xCL i.e. needs about 120ms of minimal scanning time. Minimum scan time in most cases is about 1 frame length.

There are 2 general guidelines for flashing with rolling shutter:

- Make sure your light is ON and stable the whole period of time while scanning / exposing. Minimum flash time is scanning time plus exposure time. In this case, while flashing you will get geometric distortions as mentioned above. Exposure will be determined by camera exposure time and light intensity.
- If flash time is less than scanning time then exposure time has to be at least scanning time + flash time, with a delay of scanning time. In other words, your exposure time will be scanning time plus flash time, while you use a flash delay of scanning time. Thus flash release will start after the delay of scanning time, as soon the sensor is fully open. You should keep the object in total darkness while the first scanning time. In this case, as all lines are sensitive to light at the same time after the first scan time, flashing time can be as short as you like. You will not see the typical geometric rolling shutter distortions as shown above. Imaging



will be similar to global shutter. Exposure will be determined by flash time / intensity.

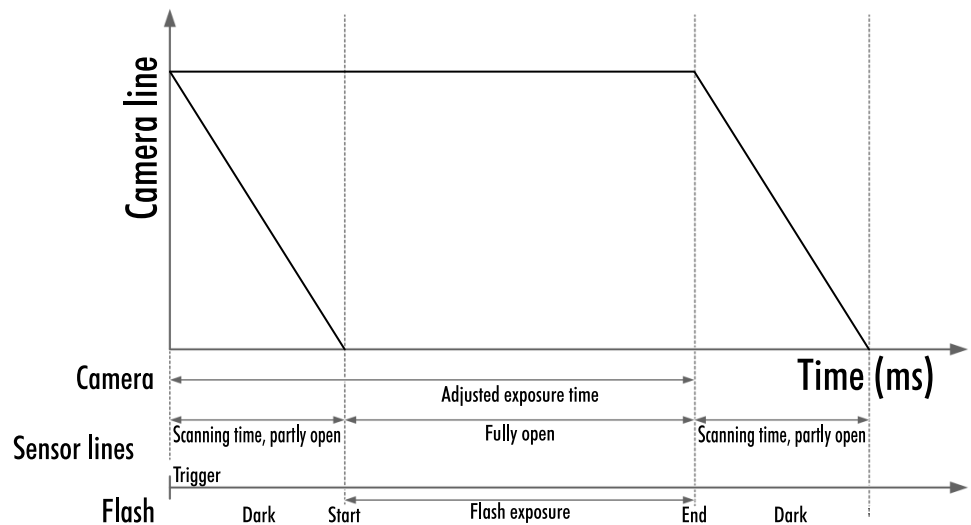


Fig. 5-19: Rolling shutter lines light sensitivity versus time

As shown here, after triggering only part of the sensor is sensitive to light (scanning time). As soon as scanning time has finished, all pixels are sensitive to light, the sensor is fully open. While being fully open this is the time where flashing should happen. In the final scanning time, less and less pixels are sensitive to light until the sensor light sensitivity will finish.

### Rolling shutter limitations

Due to the principles of rolling shutter, some standard features of Allied Vision cameras are not applicable.

- External exposure control (expose while trigger signal active) does not make sense with rolling shutter
- ROI with rolling shutter: With rolling shutter the whole sensor must always be read out. Applying ROI will reduce the amount of final data being transmitted out of the camera. The maximum achievable frame rate with applied ROI will be the maximum frame rate of the sensor reading the full sensor area (internal full sensor speed).

### Calculate frame rates

According to the calculation below, the requested times for scanning through all lines of the sensor will affect maximum frame rate calculation as well.

In this example, the camera is an exo183 with 3672 lines and 54 dummy lines. Each line takes 22.2 ms readout time (depending on configuration). The camera does have about 300  $\mu$ s exposure time delay at worst case.

Frame rate calculation with exo183 with rolling shutter	
lines	3672

Frame rate calculation with exo183 with rolling shutter			
dummy lines	+		54
total lines			3726
readout time 1x3_1Y	22,2 $\mu$ s	* 3726 =	82717,2 $\mu$ s
exp delay	+		300 $\mu$ s
frame readout time			83017,2 $\mu$ s
This is minimum time for camera readout with 0s exposure time.			
Exposure time has to be added:			
frame readout time			83017,2 $\mu$ s
exposure time			2500 $\mu$ s
total frame time			85517,2 $\mu$ s
maximum sensor acquisition time	1/ frame time		11,6 fps
note: readout time 1x2_1Y = 32,63 $\mu$ s			

### 5.1.11

## Exposure

- For various exposure and timing modes, refer to "**Basic capture modes**".
- For combining various exposure timings with PWM LED illumination, refer to "**Sequencer**" on page 74.

## SETTING EXPOSURE TIME

Exposure time can be set by width of the external or internal triggers or programmed by a given value.

### 5.1.12

## Exposure speed

Frames per second, or frame rate describes the number of frames output per second (1/ frame time). Especially GigE and USB cameras cannot guarantee predictable maximum frame rates with heavy interface bus load.

Maximum frame rate might depend on:

- Pixel clock
- Image size
- Tap structure
- Data transport limitation
- Processing time

## LIMITATIONS EXO183 ON EXPOSURE TIME

In general, the camera design permits frame rates close to this formula:

$$\text{Fps\_max} = 1 / \text{exposure time}$$

The exo183 has some specific sensor properties. Most important, due to its sensor design it comes with an additional readout time of about 56 ms. Thus, the maximum exo183 frame rate calculates as follows (as long not restricted by interface speed):

$$\text{Fps\_max} = 1 / (\text{exposure time} + 56 \text{ ms})$$

The implication is that if you want to have full speed in frames per second, with the exo183 sensor you need to take care for short exposure times.

### 5.1.13

## Auto exposure

Auto Luminance or auto exposure automatically calculates and adjusts exposure time and gain, frame-by-frame.

The auto exposure or automatic luminance control of the camera signal is a combination of an automatic adjustment of the camera exposure time (electronic shutter) and the gain.

The first priority is to adjust the exposure time and if the exposure time range is not sufficient, gain adjustment is applied. It is possibility to predefine the range (min / max-values) of exposure time and of gain.

The condition to use this function is to set a targeted averaged brightness of the camera image. The algorithm computes a gain and exposure for each image to reach this target brightness in the next image (control loop). Enabling this functionality uses always both – gain and exposure time.

## LIMITATIONS

As this feature is based on a control loop, the result is only useful in an averaged, continuous stream of images. Strong variations in brightness from one image to next image will result in a swing of the control loop. Therefore it is not recommended to use the auto-luminance function in such cases.

5.1.14

Acquisition and processing time

The camera has to read the sensor, process the data to a valid image and transfer this to the host computer. Some of these tasks are done in parallel. This implies the data transfer does not end immediately after end of exposure, as the image has to be processed and transferred after exposure.

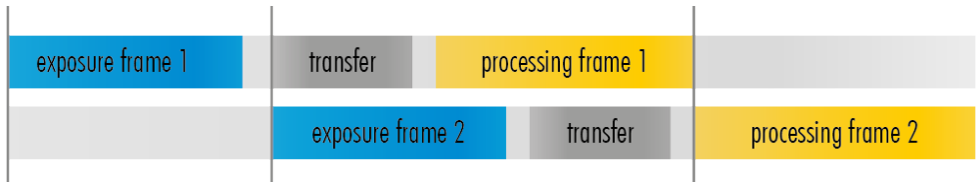


Fig. 5-20: Acquisition and processing time

On the other hand, while processing and transferring the image the sensor might capture already the next frame.

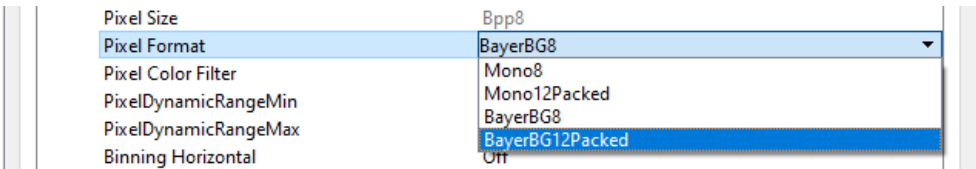
5.1.15

Bit depth

Values of brightness are internally represented by numbers. The number of bits for brightness representation is limiting the number of color values that can be represented. Bit depth defines the maximum unique colors or gray levels in an image.

No of gray values =  $2^{\text{bit depth}}$

All SVCam models support 8-bit format. In most cases, the sensor itself is limiting maximum bit depth. Refer to specifications whether your model is supporting higher bit depth.



Depending on camera model, different bit depths are supported.

PACKED FORMAT

Some camera models support “packed” bitformats. Instead of using 16 bit per pixel (and transferring a lot of zeroes), 2 bytes contain more information than only 1 pixel.

For example, in the image above, “Mono12Packed” is supported. Every pixel has a bit depth of 12 bit. Information transfer has to be in 8-bit steps (8, 16, 24 etc). By packing, 2 pixel can be transferred in 3 bytes (24 bit) instead of 2 x 16 bit (4 bytes). This increases bandwidth by 25%. This packing does not affect image quality, but the image needs to be unpacked (with an SVCam SDK function, very fast) after image acquisition before the image can be processed.

Unpacking has to be done manually, this is not a GenTL function. Thus, image acquisition in packed formats won't be supported by most 3rd party software products.

## 5.1.16

### Polarized sensor

Apart from brightness and wavelength, the polarization is part of the fundamental properties of light. Our polarized camera with the new Sony polarized sensor can capture polarization information which cannot be detected by conventional imaging devices. This opens the door to new applications in industrial machine vision applications and beyond. Prominent examples include the analysis of the orientation of carbon fibers, the visualization of tensions in glass caused by stress induced birefringence, the reduction of reflections and glare or simply the enhancement of contrast between materials that are difficult to tell apart with conventional imaging modalities.

#### WHAT IS LIGHT POLARIZATION

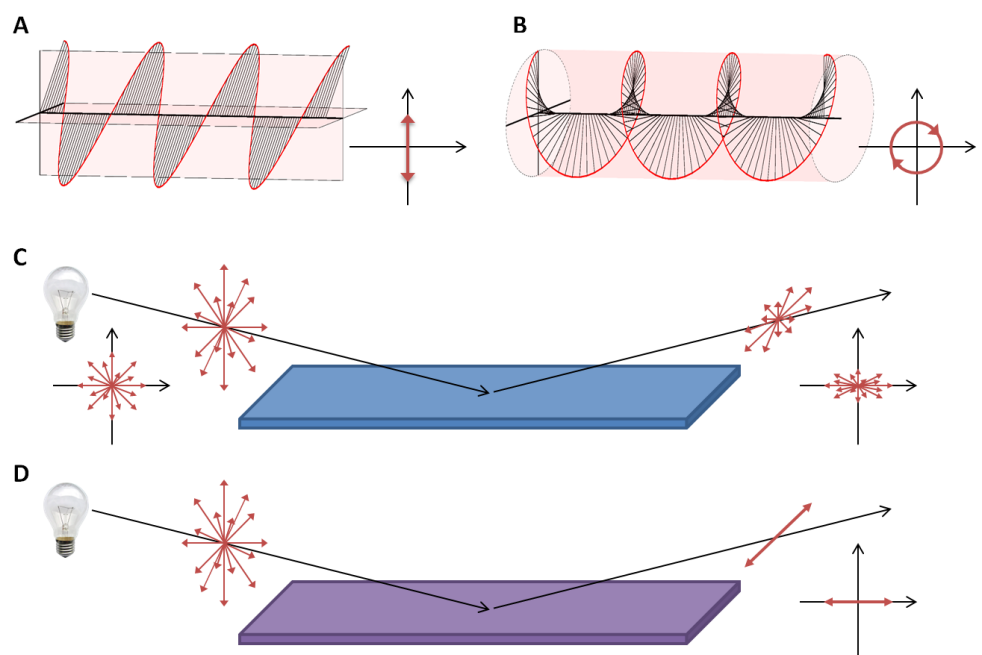


Fig. 5-21: Light polarization

Polarization is a property that characterizes the geometrical orientation of the oscillation of the electric field of light. Linear polarized light, for example, is light that oscillates only in one plane perpendicular to the direction of

propagation. Figure A visualizes a linearly polarized wave of one wavelength. Additionally, the figure shows circular polarization (Figure B). It can be obtained by transmitting linear polarized light through optical active media for instance.<sup>1</sup>

Light that we encounter in our natural environment from most common light sources is typically unpolarized, i.e. the light consists of a multitude of waves with oscillation orientations that are statistically distributed (see Figure C, left). An interesting effect occurs when this unpolarized light gets reflected off dielectric materials like for example glass. These materials show a reflectivity that differs for polarization components that are polarized parallel to the surface normal of the material compared to the components that are polarized perpendicular to it. The difference in reflectivity is dependent on the reflective index of the material as well as on the incident angle. Thus, the reflected light typically shows a partial polarization (Figure C, right). Incident light at a specific angle, the so called Brewster angle, has the interesting property that only polarization components perpendicular to the surface normal are reflected, resulting in linear polarized reflected light (Figure D).

- (A) Linear polarization at 125° and 2D representation of the electric field vector for a complete cycle.
- (B) Circular polarization and 2D representation of the trace of the electric field vector over a complete cycle describes a circle.
- (C) Light from multiple sources, as obtained from the sun or incandescent light bulbs, consists of multiple wave trains. They generally show intensity and oscillation orientations that are statistically distributed, so called unpolarized light. It shows the reflection at the interface of a dielectric material. The reflectivity of the polarization component that is parallel to the surface normal differs from the polarization component that is perpendicular to it. Thus, the resulting polarization is not unpolarized anymore but partially polarized.
- (D) For a specific material-dependent angle only the polarization component that is parallel to the surface normal gets reflected. This angle is called the Brewster angle.

---

<sup>1</sup> Linear polarized light can be thought of as an addition of two coherent waves along two orthogonal directions. An optical active media can show a different refractive index for polarizations along these two directions, such that the two partial waves propagate with different speed through the media and acquire a phase difference. The addition of these two phase shifted waves results in elliptical or circular polarization, as the resulting electric field vector turns in an elliptic or circular pattern (Figure 1B). Circular polarization is obtained for a phase shift of exactly 90° in either direction.

## MEASURING POLARIZATION

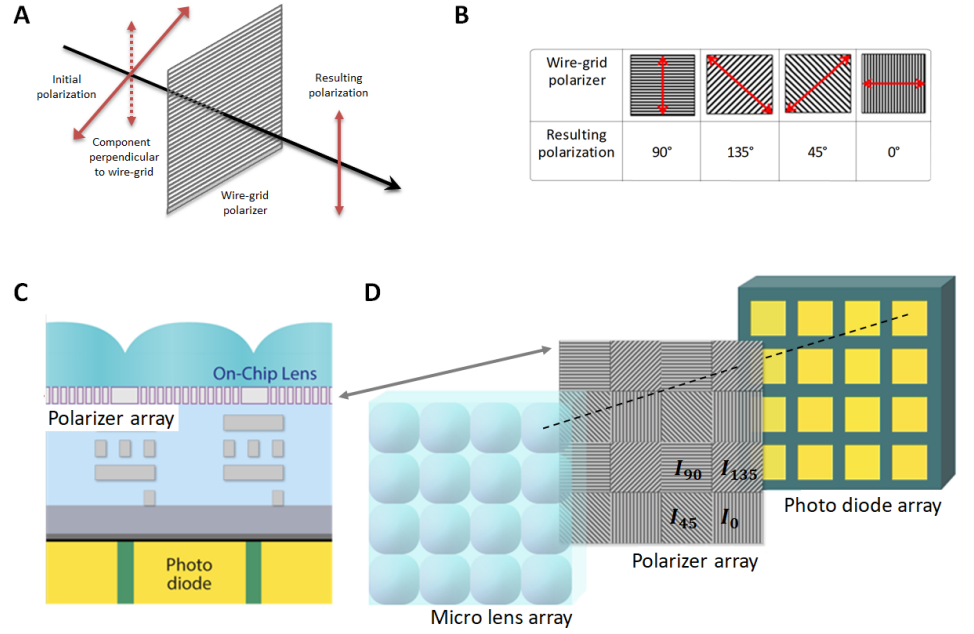


Fig. 5-22: Polarization filters

$$S_0 = I_0 + I_{90}$$

$$S_1 = I_0 - I_{90}$$

$$S_2 = I_{45} - I_{135}$$

To characterize the polarization of light linear polarizers can be used. They are an easy and efficient way to obtain linear polarization from unpolarized light. Multiple realizations of polarizers exist and explaining them all would surpass the scope of this paper. Here we want to focus on the grid polarizer. This is an optical element consisting of an array of sub-wavelength parallel metal nanowires. The component of the incident electric field that is polarized parallel to these metal wires is blocked such that only the polarization components perpendicular to the nanowire grid is transmitted (Figure A). These nanowire grids are employed in our polarized camera.

A four-directional polarization square filter array is overlaid directly on top of the pixel array and beneath the micro lenses (Figure C, D). This filter consist of repeated 2x2 patterns consisting of grid polarizers with four different angles at 0°, 45°, 135° and 90° (Figure D). Each polarizer filters the incoming light such that only the polarization components perpendicular to the grid orientation can pass through and be detected by the underlying photodiode. Thus, a four directional polarization image can be captures in one shot.

- (A) A grid polarizer blocks the polarization component that is parallel to the grid array. Only light perpendicular to the grid can pass through.
- (B) Grid polarizers with different grid orientations result in linear polarized light with orientations perpendicular to the grid orientation, respectively. Here grid orientations of 0°, 45°, 135° and 90° are shown.

- (C) The IMX250MZR sensor has a polarization filter array added to the photodiode array. A short distance between polarizer and the photodiode reduces the effect of crosstalk, i.e. the wrong detection of a polarization angle by a neighboring pixel. The sensor shows excellent image quality in various light source environments.
- (D) The polarization filter array consists of multiple 2x2 patterns that show four different wire grid orientations. The respective measured signal  $I$  of a 2x2 pattern is a measure of the amount of light with  $0^\circ$  ( $I_0$ ),  $135^\circ$  ( $I_{135}$ ),  $45^\circ$  ( $I_{45}$ ) and  $90^\circ$  ( $I_{90}$ ) polarization. These intensities can be used to estimate the angle of linear polarization  $\Theta$  as well as the degree of linear polarization DoLP. (Images in C and D are adapted from Sony)

In subsequent post processing this image can be used to obtain four images filtered by one polarization filter, respectively. Additionally, the images can be used to estimate the spatial distribution of the brightness of each 2x2 pattern by averaging, as well as the associated linear polarization angle  $\Theta$  and the degree of linear polarization **DoLP** (Figure 3).

The pixel intensities  $I$  of a 2x2 pattern are a measure of the amount of light with  $90^\circ$  ( $I_{90}$ ),  $135^\circ$  ( $I_{135}$ ),  $45^\circ$  ( $I_{45}$ ) and  $0^\circ$  ( $I_0$ ) polarization, respectively (Figure 2D). Addition and Subtraction of these intensities are known as Stokes Parameters <sup>1</sup>:

Conveniently, the polarization angle  $\Theta$  and the degree of linear polarization **DoLP** are easily computed from the Stokes parameters <sup>2</sup>:

$$\Theta = \frac{1}{2} \text{atan} \left( \frac{S_2}{S_1} \right) \quad \text{DoLP} = \frac{\sqrt{S_1^2 + S_2^2}}{S_0}$$

Examination of these values provides an imaging contrast enhancement in a multitude of applications compared to standard camera imaging, as shown in the following application examples.

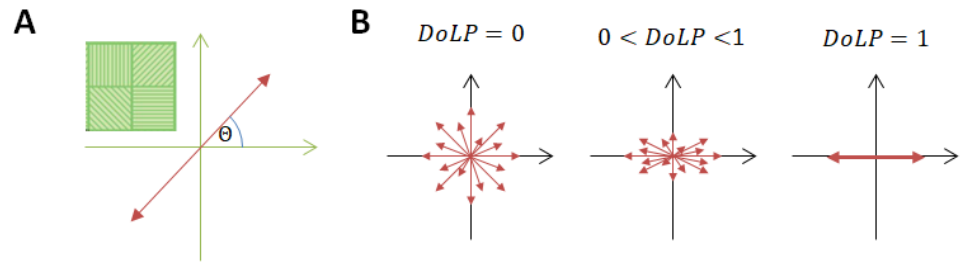


Fig. 5-23: Polarization angle

- (A) Angle of polarization  $\Theta$  as compared to the orientation of the 2x2 four-directional polarization pattern.

<sup>1</sup>Note that the fourth Stokes parameter  $S_3 = I_R - I_L$ , which is calculated from the intensities of right and left circular polarized light, cannot be obtained from the image.

<sup>2</sup>The inverse tangent needs to be computed such that it returns values in the closed interval  $[-180^\circ, 180^\circ]$ .



- (B) Degree of linear polarization (DoLP) is zero for unpolarized light and one for perfectly linear polarized light. In the case of light with partial polarization a value between zero and one is obtained

## 5.2 Camera features

The features of the Allied Vision cameras are defined by the combination of its electronics and firmware features. Firmware features can be upgraded with new firmware releases.

### 5.2.1 IR / glass filter

To avoid influences of infrared light to your image, cameras are equipped with an IR (Infrared) cut filter or an anti-reflection coated glass (AR filter).

- Monochrome cameras come by default with an AR-Filter (anti reflex)
- Color models version comes by default with an IR-cut-filter
- IP67 BlackLine models do have an IR-cut filter (color) or glass (monochrome)

Refer to your camera order to see if a filter is built in. Alternatively look at the sensor. Built-in IR-filters are screwed into the lens mount. Filters will change the optical path length. The camera specs are including the standard filters.

#### IMAGE IMPACT OF IR CUT FILTER

Due to chromatic aberration, limiting the spectral bandwidth of light will result in sharper images. Without an IR cut filter:

- Monochrome sensor images might get muddy.
- Color sensor images are affected, especially red will be higher in intensity than visible with bare eyes. White balance gets much more difficult. Contrast is lower.

Allied Vision recommends IR cut filter for high demands on sharpness with monochrome or color sensors.

#### SPECTRAL IMPACT OF IR CUT FILTERS

IR cut filter influence the spectral sensitivity of the sensor. The spectral graph below shows the wavelength relative impact of the Allied Vision standard filter.

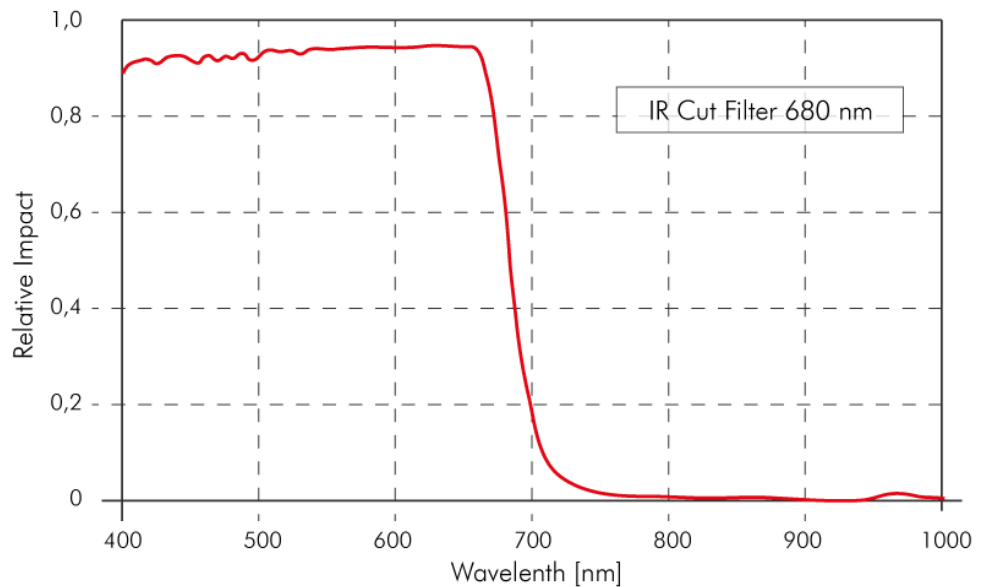


Fig. 5-24: IR cut filter light transmission

## FOCAL IMPACT OF FILTERS

As an IR cut filter mainly consist of a small layer of glass (1 mm thick) there is an impact on the flange focal distance. Refraction within the layer cause shortening this distance.

When ordering a standard camera with an extra IR cut filter you might have to compensate the focal length with an extra ring. Please refer to your local distributor for more detailed information on your camera behaving on C-Mount integrated filters.

As BlackLine models have an IR cut filter by default, the focal distance is compensated by default.

Removing the IR cut filter lengthen the focal distance and will invalidate camera warranty.

### 5.2.2 Shading correction

#### OVERVIEW

The interactions between objects, illumination, and the camera lens might lead to a non-uniform flat-field in brightness. Shading describes the non-uniformity of brightness from one edge to the other or center towards edge(s).

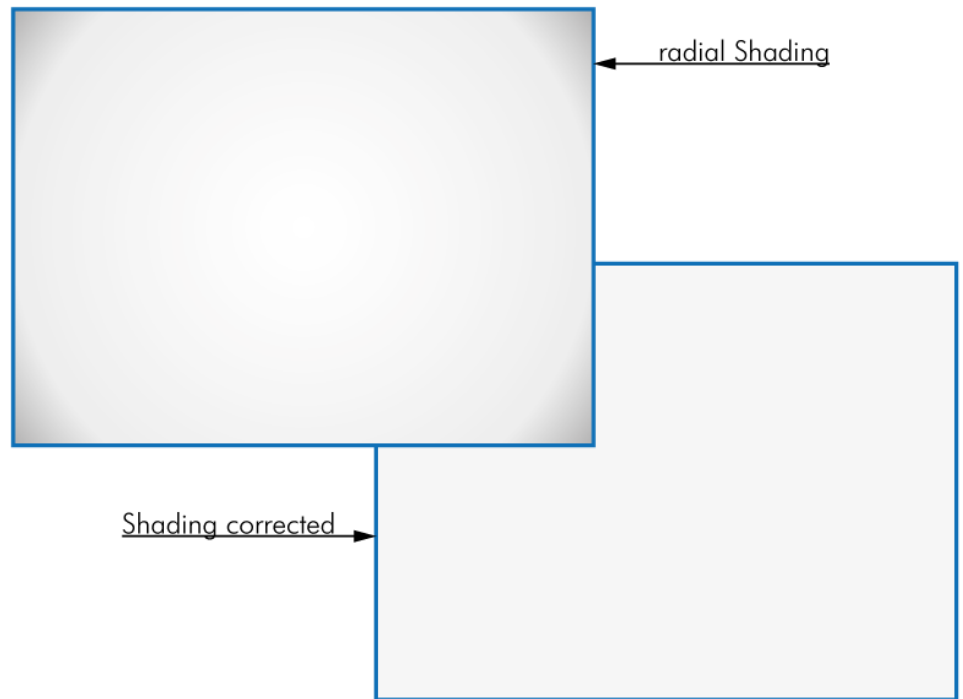


Fig. 5-25: Original and shading corrected image

This shading can be caused by non-uniform illumination, non-uniform camera sensitivity, vignetting of the lens, or even dirt and dust on glass surfaces (lens).

Shading correction is a procedure to create a flat-field image out of a non-uniform image regardless of the reasons of the non-uniformity. Before doing shading correction, make sure your lens is clean and in perfect condition. If the lens is not clean or the lighting not uniform, the algorithm tries to compensate these as well, resulting in a wrong shading table and visible artifacts, loss of details, or local noise in the final image.

In theory, there are several locations of shading

- In the host computer: significant loss of dynamic range
- In the camera, digital: better (smoother) shading than on computer, still loss of dynamic range
- In the camera, analog: set gain / offset locally direct on sensor to get optimum shading correction with only small changes in dynamic range

Shading correction might reduce the dynamic range of the images. By using different gains and offsets on the sensor local noise might be less uniform. Structures in the reference image might lead to visible shading artifacts.

## HOW IT WORKS

The tool will divide the image into squares of 16x16 pixel. Out of every 16x16 pixel cluster a set of shading values consisting of specific gain and offset per cluster is calculated. The resulting map can be uploaded into the camera and will compensate for any shading, lens-based or based on illumination.

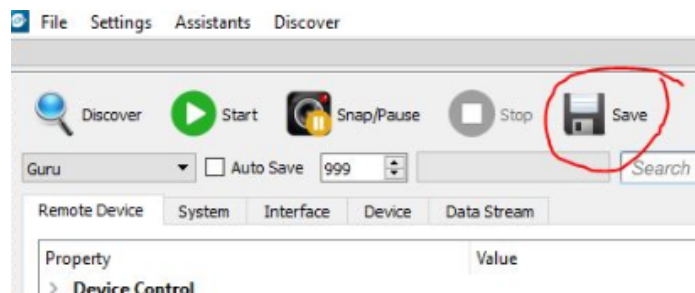
## CREATING A SHADING MAP

Shading maps are test files containing a description for the camera how to balance shading control. Shading maps can be created and uploaded to the camera with SVCapture. The shading map creation process takes any image with any illumination and creates a shading map out of it. This shading map will be uploaded into the camera afterward.

1. Connect the camera to the PC and open it with SVCapture2.
2. Make a picture in which you can see the vignetting (shading).

Check that the image is not over-exposed and AOI and Binning is disabled.

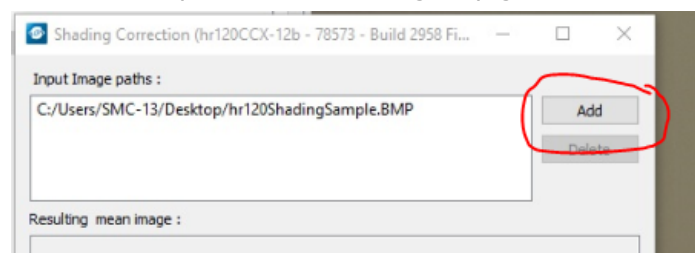
3. Save the image as a \*.bmp file.



4. In **Shading Correction > Control**, enable or disable shading correction.
5. In **Shading > Shading Map Selector** select a shading map.



6. Open **Assistant > Shading Correction** and select **Generate Map...**
7. Add the \*.bmp file to the shading map generator.



8. Select **Generate map**. The map is saved in the background.

9. After the map is successfully created, upload the map in the camera by selecting **Upload map to camera**.
10. Select **Yes** for saving the map in the user set.

Shading correction is possible with certain models only. See camera specs whether your model does support this. In case your camera is not supporting, the assistant will not be selectable.

1. Take shading reference images with shading correction disabled (use 16 images minimum) and save the to the local hard drive. As file format, use .bmp files with more than 8 bit.
2. Start **Assistants > Shading Correction > Generate Map**.

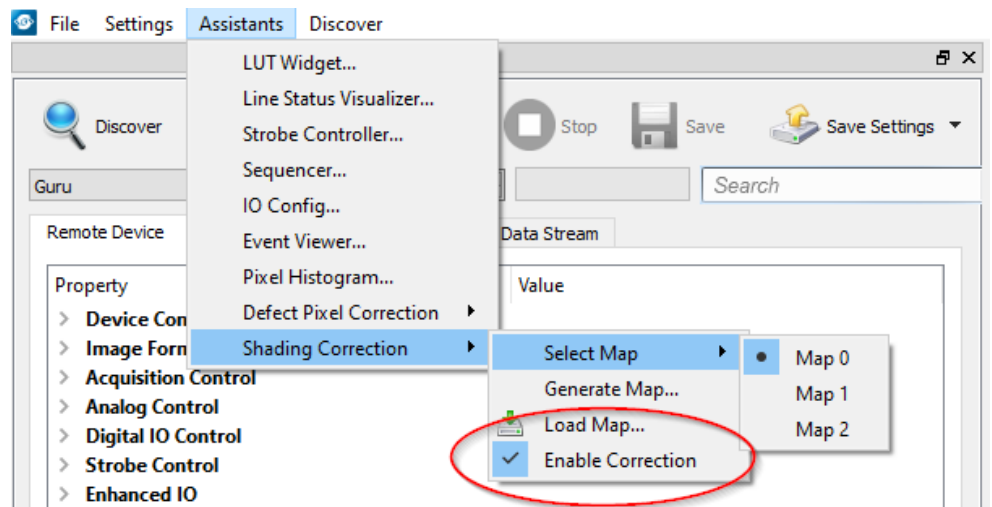
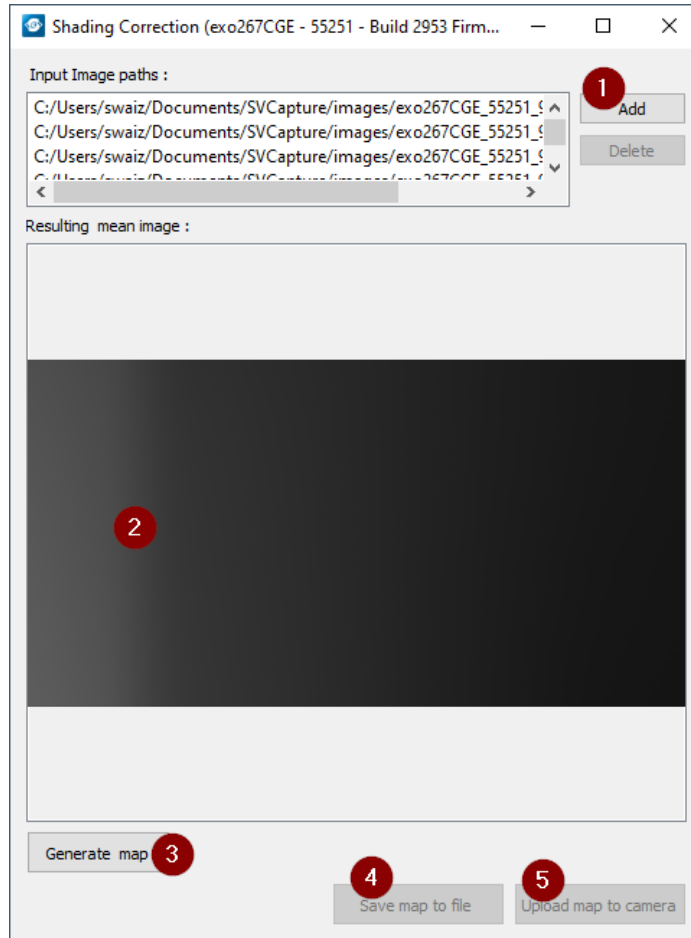
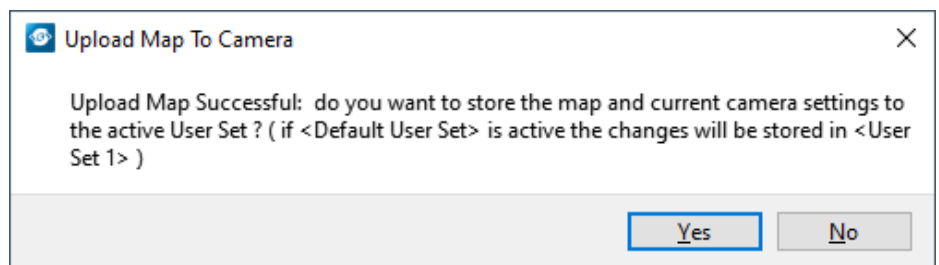


Fig. 5-26: Shading control disabled

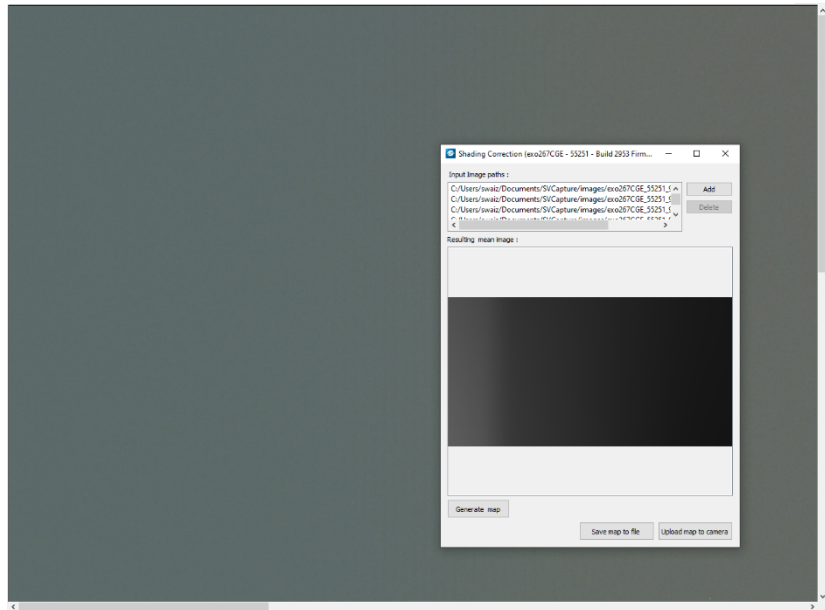
3. Load the reference images.



4. Observe the shading in the preview (2).
5. Select **Generate map** (3) to create the shading map.
6. Select **Save map to file**. This file can be used in programmed environments via SDK as well.
7. Select **Upload map to camera** and check the result. If the lighting did not change from start of procedure, you should see a uniform image with enabled shading control.



8. Run the camera with same lighting to see corrected image.



### 5.2.3

## Defect pixel correction

All image sensor have defect pixels in a lesser or greater extent. Type and number of defects determine the quality grade (quality classification) of the sensor.

Defect pixel correction is using information from neighboring pixels to compensate for defect pixels or defect pixel clusters (cluster may have up to five defect pixels).

Defect pixels can either be dark pixels, i.e. that don't collect any light, or bright pixels (hot pixel) that always are outputting a bright signal.

The amount of "hot" pixels is proportional to exposure time and temperature of the sensor.

By default, all known defect pixels or clusters are corrected as a factory default.

Under challenging conditions or high temperature environments defect pixel behavior might change. This can be corrected.

- A factory created defect map (Allied Vision map), defying known defects, is stored in the camera.
- A custom defect map can be created by the user. A simple \*.txt file with coordinates must be created. The user must locate the pixel defects manually.
- The \*.txt file can be uploaded into the camera. Beware of possible Offset!
- Defect maps can be switched off to show all default defects, and switched back on to improve image quality.

Unlike shading correction, defect pixel correction suppresses single pixels or clusters and reconstructs the expected value by interpolating neighboring pixel values. The standard interpolation algorithm uses the pixel to the left or to the right of the defect. This simple algorithm prevents high run-time losses. More sophisticated algorithms can be used by software.



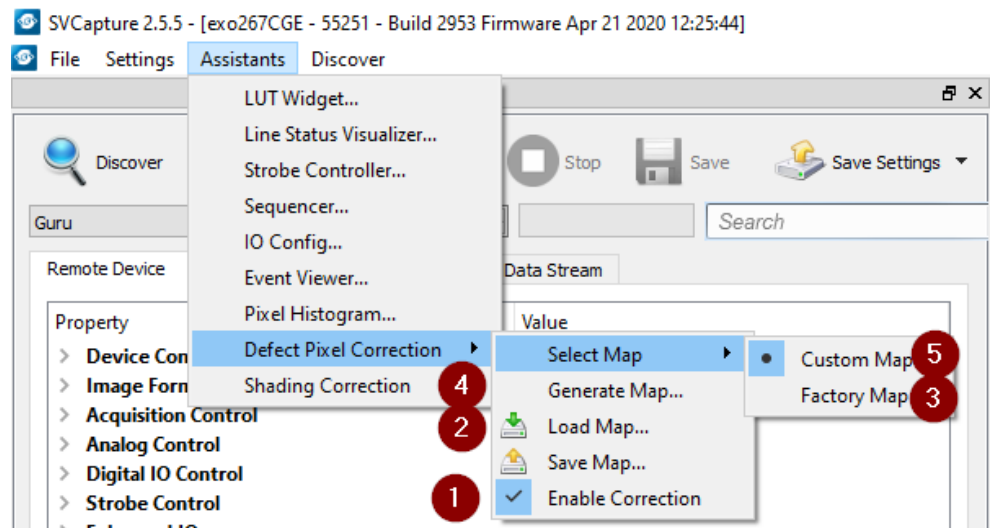
Fig. 5-27: Illustration of a defect pixel



## PROCEDURE OF PIXEL CORRECTION

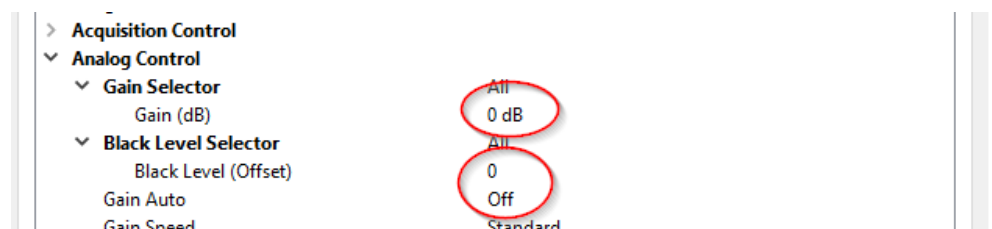
SVCapture is the tool to generate pixel correction maps. The pixel correction assistant provides everything to create, load, enable and restore defect pixel creation maps.

Defect pixel correction is possible with certain models only. See camera specs whether your model does support this. In case your camera is not supporting, the assistant will not be selectable.



- For easy image processing, it is recommended to have pixel correction activated
- Pixel correction maps can be saved and loaded
- The std factory map can be selected any time
- Generate your own custom map
- Select your own defect pixel map

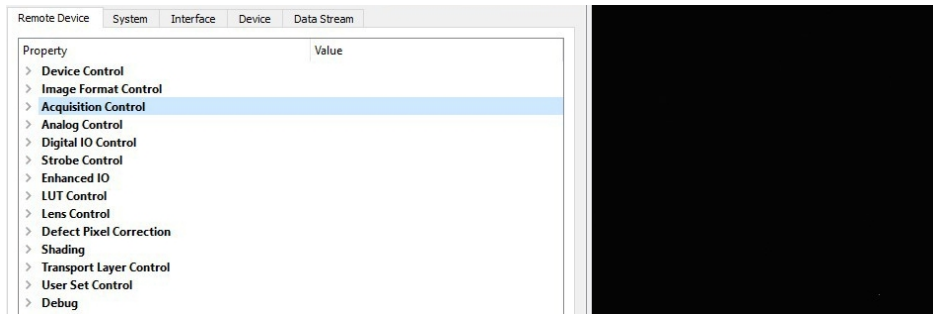
The procedure to create a std map is pretty straight forward. Before starting generating the map, in the GenICam tree do the following:



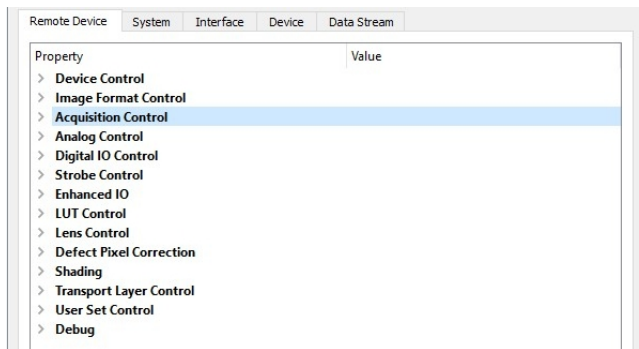
1. Set gain to "0 dB".
2. Disable **Gain Auto**.
3. Set **Offset** to "0".
4. Record a set of dark images with the lens cap on.

## DEFECT PIXEL MAP GENERATION

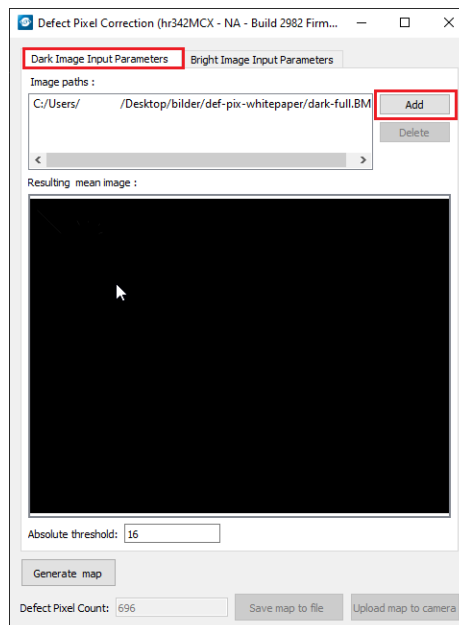
1. Save a completely dark image as bmp file.



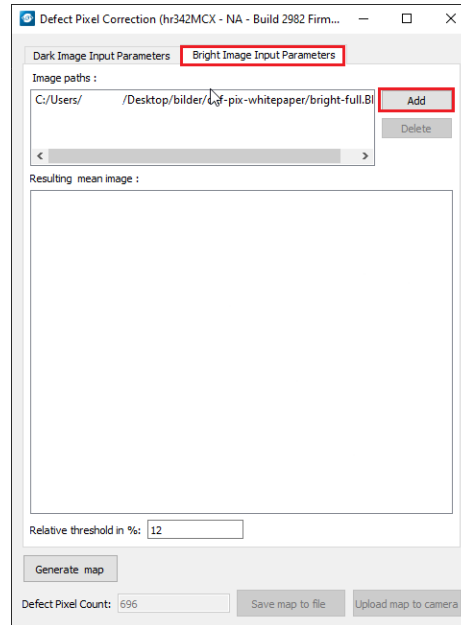
2. Save a completely white image as bmp file.



3. Open **Assistant > Defect Pixel Correction > Select Map > Custom Map**.
4. Select **Generate Map....**
5. Add a "Dark Image".

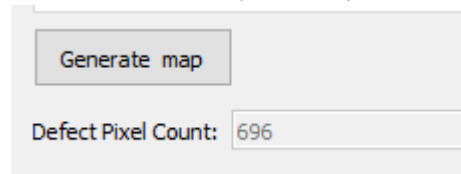


6. Add a "Bright Image".



7. Select **Generate map**.

8. Observe how many defect pixel were detected in the "Defect Pixel Count".



9. Select **Upload map to camera**.

## 5.2.4

### Look-up table

The look-up table feature (LUT) lets the user define certain values to every bit value that comes from the ADC. To visualize a LUT a curve diagram can be used, similar to the diagrams used in photo editing software.

The shown custom curve indicates a contrast increase by applying an S-shaped curve. The maximum resolution is shifted to the mid-range. Contrasts in this illumination range is increased while black values will be interpreted more black and more of the bright pixels will be displayed as 100 % white.

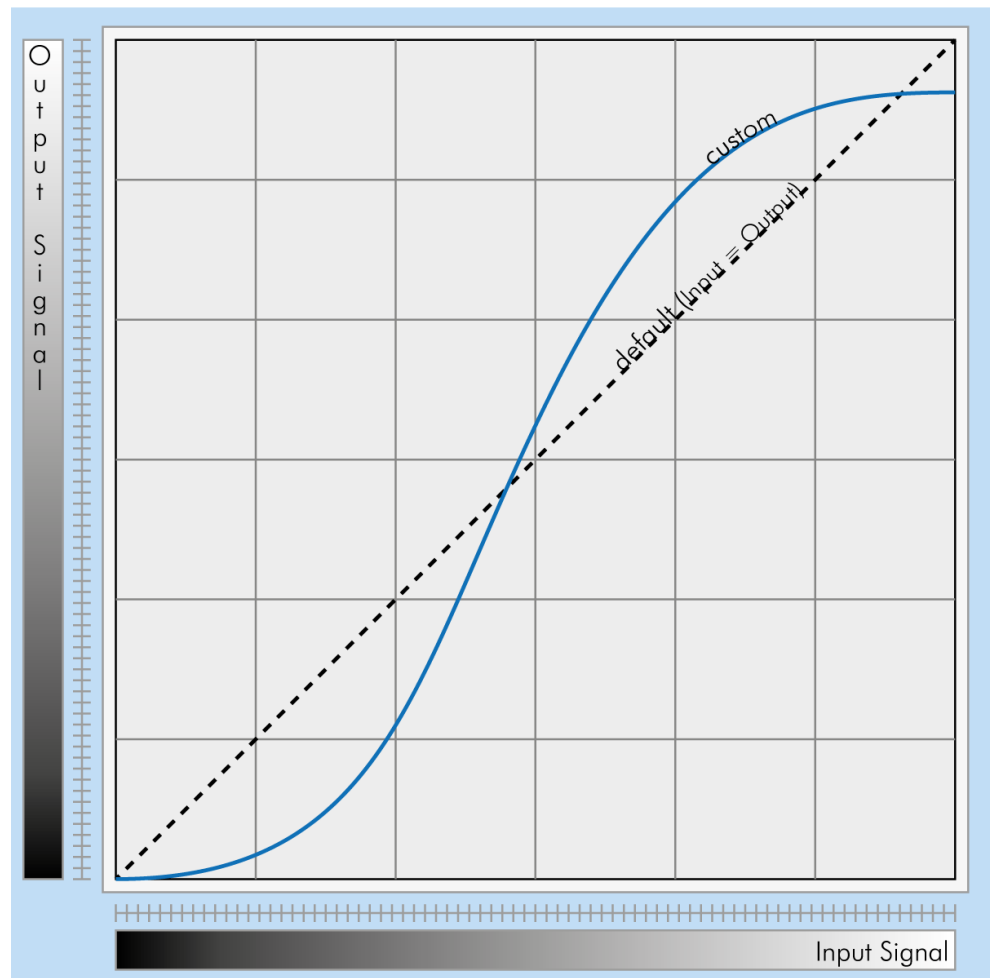


Fig. 5-28: Custom LUT adding contrast to the mid-tones

LUT implementation reduces bit depth from 12 bit to 8 bit on the output.

### **GAMMA CORRECTION**

Using the look-up table makes it also possible to implement a logarithmic correction. This is commonly called “gamma correction”.

Historically gamma correction was used to correct the illumination behavior of CRT displays, by compensating brightness-to-voltage with a gamma value between 1,8 up to 2,55.

The gamma algorithms for correction can simplify resolution shifting as shown seen below.

- Input & output signal range from 0 to 1
- $\text{Output-signal} = \text{Input-signal}^{\text{Gamma}}$

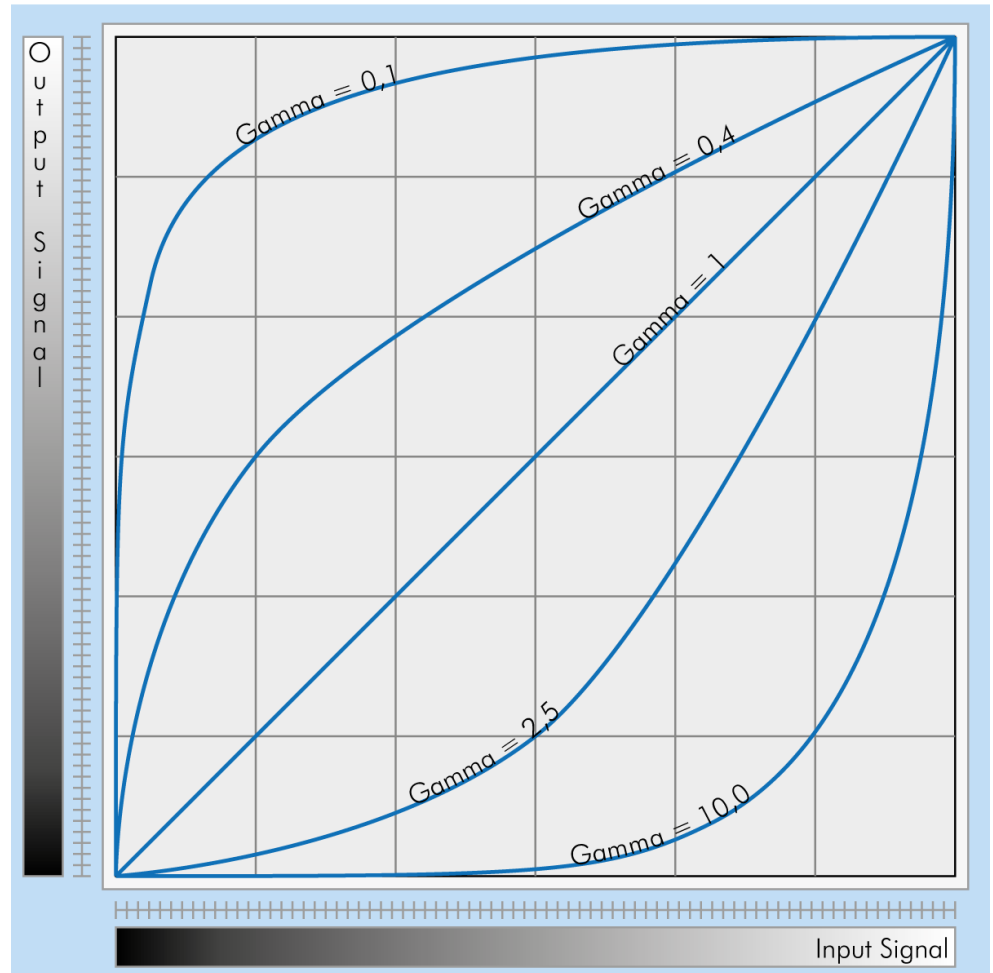


Fig. 5-29: Several gamma curves comparable to a LUT

- Gamma values less than 1.0 map darker image values into a wider ranger.
- Gamma values greater than 1.0 do the same for brighter values.

Gamma algorithm is just a way to generate a LUT. It is not implemented in the camera directly.

## GAMMA CORRECTION

Using the look-up table makes is also possible to implement a logarithmic correction. This is commonly called “gamma correction”.

Historically gamma correction was used to correct the illumination behavior of CRT displays, by compensating brightness-to-voltage with a gamma value between 1,8 up to 2,55.

The gamma algorithms for correction can simplify resolution shifting as shown seen below.

- Input & output signal range from 0 to 1
- Output-signal = Input-signal<sup>Gamma</sup>

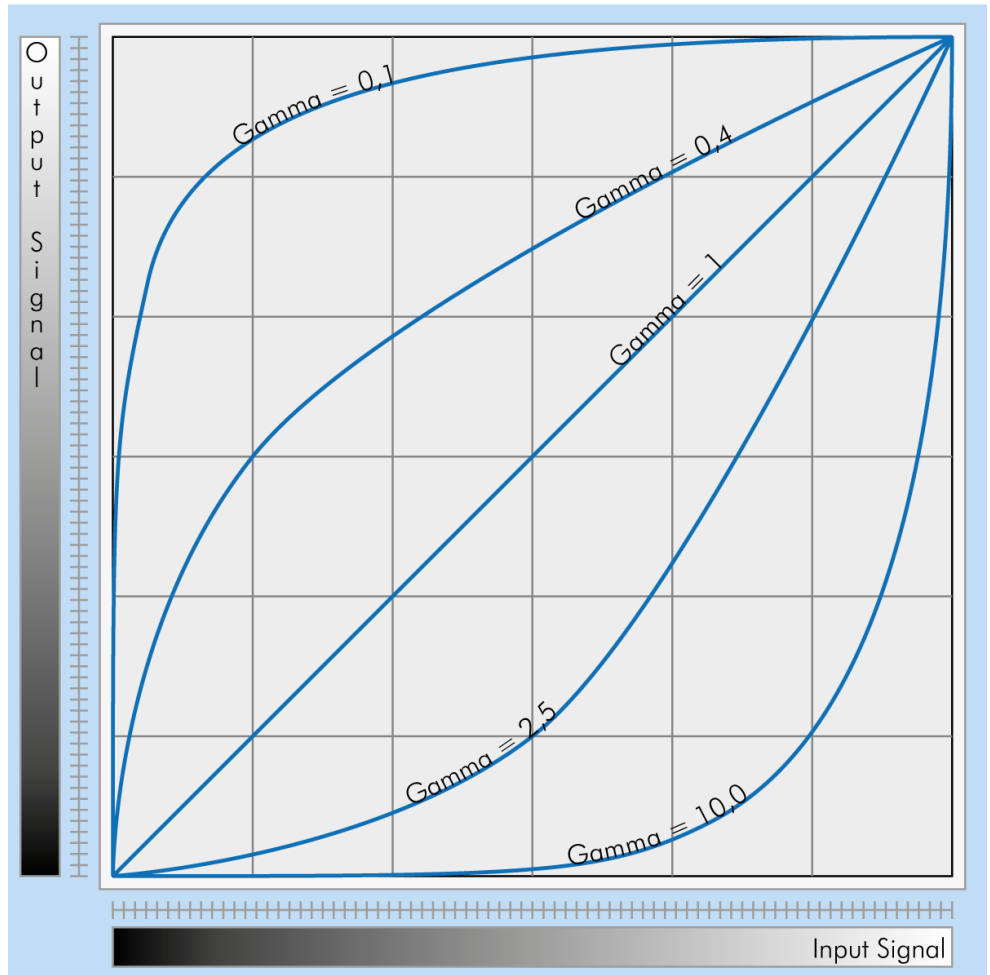


Fig. 5-30: Several gamma curves comparable to a LUT

- Gamma values less than 1.0 map darker image values into a wider ranger.
- Gamma values greater than 1.0 do the same for brighter values.

Gamma algorithm is just a way to generate a LUT. It is not implemented in the camera directly.

## 5.2.5

### ROI / AOI

In partial scan mode or Area-Of-Interest (AOI) mode (or Region-Of-Interest (ROI) mode) only a certain region of the sensor will be read.

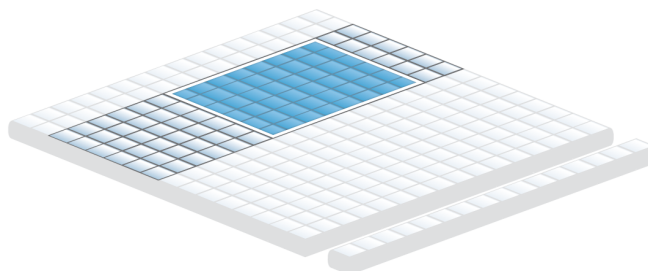


Fig. 5-31: AOI on area sensor

Selecting an AOI will reduce the number of horizontal lines being read. This will reduce the amount of data to be transferred, thus increasing the maximum speed in terms of frames per second.

With CCD sensors, setting an AOI on the left or right side does not affect the frame rate, as lines must be read out completely.

With CMOS Sensors, AOI is sensor dependent. Some CMOS sensors require the camera to read full horizontal sensor lines internally. Reducing horizontal size with AOI might result in limited frame rate gain.

### ROI DIMENSION LIMITS

Sensors have special requirements regarding the sizing of regions of interest. The following restrictions apply to your sensor type:

Camera	Sensor	Bit depth	smallest ROI	Width step x	Height step y	Offset x	Offset y
exo	Sony IMX	8	128x2	8	2	8	2
exo	Sony IMX	12	128x2	16	2	8	2
exo814CU3	ICX814	8	16x16	8	1	8	2
exo814CU3	ICX814	12	16x16	16	1	16	2
exo4000CG-E	CMV4000	8	32x32	8	2	8	2
exo4000CG-E	CMV4000	12	32x32	16	2	8	2

Table: 5-2: ROI sizes

## 5.2.6

### Basic capture modes

The camera has 2 basic operation modes.

- Free run (timed) run: The camera will expose and deliver images on a fixed schedule.
- Triggered: The camera will wait for an external signal and start exposure after receiving the external trigger signal.

#### FREE RUNNING

Free running (fixed frequency) with programmable exposure time. Frames are read continuously and valid data is indicated by LVAL for each line and FVAL for the entire frame.

There is no need to trigger the camera in order to get data. The exposure time is set via the serial interface and calculated by the internal logic of the camera.

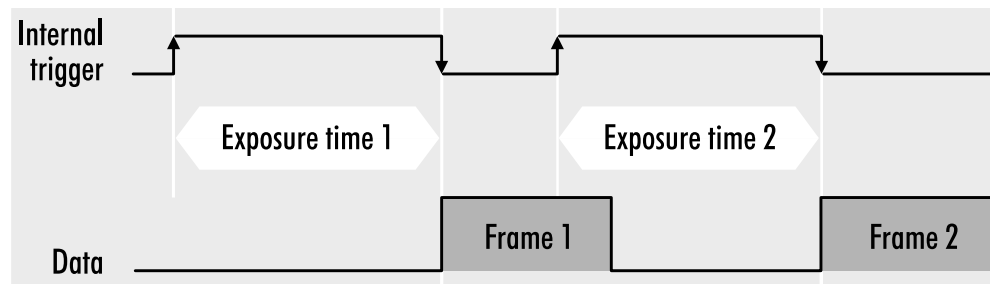


Fig. 5-32: Mode 0 - Free running with programmable exposure time

The fundamental signals are:

- Line Valid: LVAL
- Frame Valid: FVAL
- For triggered modes: trigger input

#### TRIGGERED MODE (PULSE WIDTH)

External trigger and pulse-width controlled exposure time. In this mode the camera is waiting for an external trigger, which starts integration and readout. Exposure time can be varied using the length of the trigger pulse (rising edge starts integration time, falling edge terminates the integration time and starts frame read out). This mode is useful in applications where the light level of the scene changes during operation. Change of exposure time is possible from one frame to the next.



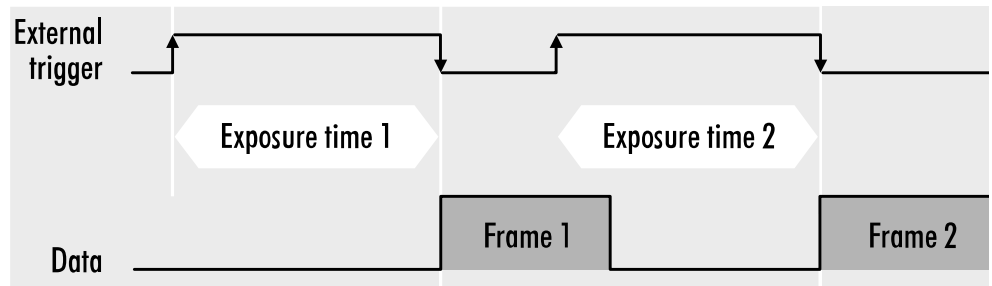


Fig. 5-33: Mode 1: External Trigger with Pulse Width Exposure Control (overlap)

Exposure time of the next image can overlap with the frame readout of the current image (rising edge of trigger pulse occurs when FVAL is high). When this happens: the start of exposure time is synchronized to the falling edge of the LVAL signal.

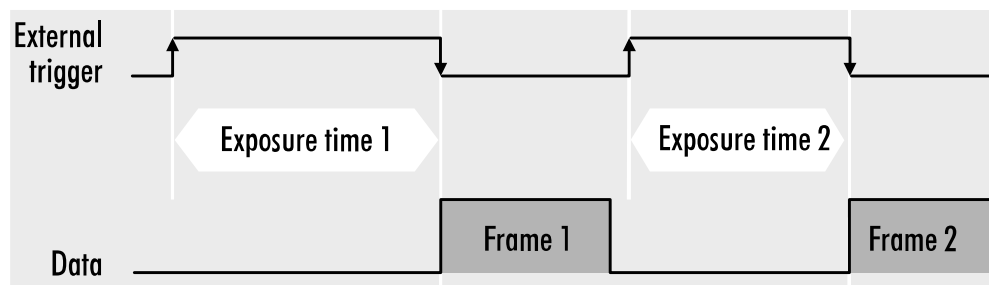


Fig. 5-34: Basic capture modes - triggered mode (pulse width without overlap)

When the rising edge of trigger signal occurs after frame readout has ended (FVAL is low) the start of exposure time is not synchronized to LVAL and exposure time starts after a short and persistent delay.

The falling edge of the trigger signal must always occur after readout of the previous frame has ended (FVAL is low).

## SOFTWARE TRIGGER

Trigger can also be initiated by software or serial interface.

Software trigger can be influenced by jitter. Avoid software trigger when using time sensitive applications.

### 5.2.7

## Micro Four Thirds lenses

MFT lenses are able to change focus, zoom and aperture by camera control. The Tracer series models support special mount type. For matching lenses visit [http://www.four-thirds.org/en/microft/lens\\_chart.html](http://www.four-thirds.org/en/microft/lens_chart.html) or call your local Allied Vision distributor.

For Allied Vision MFT cameras, you'll find the controls in the GenICam tree as soon as the lens is mounted on the camera.

## MOUNTING LENSES

There is a difference in the back focus distance between „Four Thirds“-lenses and „Micro Four Thirds“ lenses. Your camera is equipped with a „Micro Four Thirds“ connector.

1. Mount a Micro Four Thirds lens on the camera before powering up the camera.
2. Make sure the lens locks into the bayonet so that the pin connection between camera and lens for remote control will work properly.

### Changing the MFT lens

1. For changing the MFT-lens switch off the power.
2. Open the lock by pressing the unlock pin and remove by turning the lens.
3. After the change switch power on again.

## 5.2.8

### Read-out control

Read-out control defines a delay between exposure and data transfer. Read-out control is used to program a delay value (time) for the readout from the sensor.

With more than one camera connected to a single computer, image acquisition and rendering can cause conflicts for data transfer, on CPU or bus system.

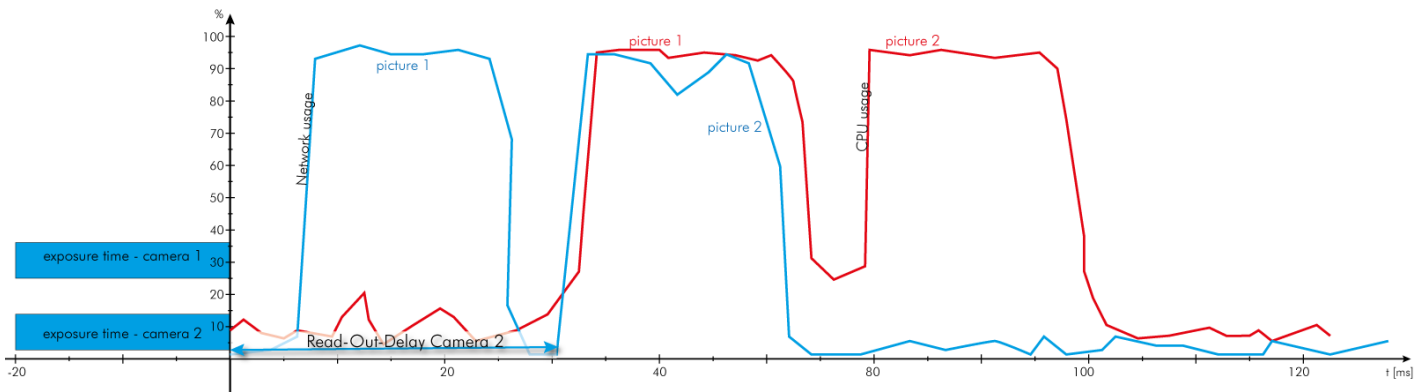


Fig. 5-35: Illustration of physical data stream in time

## 5.2.9

### Temperature sensor

A temperature sensor is installed on the main board of the camera. To avoid overheating, the temperature is constantly monitored and read. Besides software monitoring, the camera indicates high temperature by a red flashing LED (see flashing LED codes).

### 5.2.10 System clock frequency

Default system clock frequency in almost every SVCam is set to 66.6 MHz. To validate your system frequency refer to: specifications.

Using the system clock as reference of time, time settings can only be made in steps. In this example, the transfer rate is 66.7 MHz, thus resulting in steps of 15 ns.

$$t = \frac{1}{66.6 \text{ MHz}} = \frac{1}{66\,666\,666.6 \frac{1}{s}} = 15 \cdot 10^{-9} \text{ s} = 15 \text{ ns}$$

Use multiples of 15 ns to write durations into camera memory.

### 5.2.11 Pixel clock frequency selection

Besides the factory frequency setting other values can be available for some CCD sensors. Charges will be transported faster, more frames per second will be generated. IMX sensors from Sony are running with default value as recommended in sensor specifications and cannot be modified.

Higher Frequencies can result in a loss of quality.

### 5.2.12 Predefined configurations (user sets)

The camera starts with default values for all features when turned on. Settings made during operation will expire when the camera is turned off.

All preset adjustments are located in the GenICam tree in the "User Set Control" property. It is possible to save up to 8 user sets. Each of these setups consists of a complete configuration set including exposure time, delays, I/O configuration for the camera. These user sets can be loaded at run-time. In addition, you can specify which setup is loaded as default when the camera is switched on.

#### LOAD A USER SET

With UserSetSelector a user set can be selected. Select the desired user set and press UserSetLoad (command) twice to load the user set. The following example loads user set 2.



## SAVE USER SETS

Select the user set to be saved in the UserSetSelector and save it with the UserSetSave command.



▼ User Set Control	
▼ UserSetSelector	User Set 2
UserSetLoad	(command)
UserSetSave	(command)
User Set Default	User Set 5

## SET A USER SET AS DEFAULT

Use User Set Default to select the user set that is to be loaded when the camera is started. Save this setting with UserSetSave (In the example below, user set 5 is saved as default).



▼ UserSetSelector	User Set 2
UserSetLoad	(command)
2 UserSetSave	(command)
1 User Set Default	User Set 5

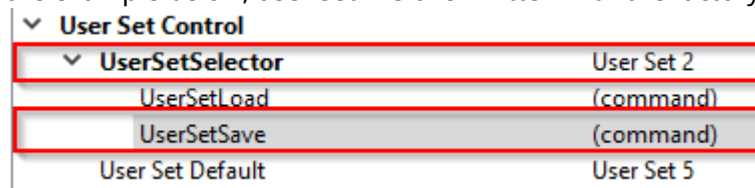
## RESET TO FACTORY DEFAULT

User sets can be reset to factory settings. This is a two-step process. First, the factory settings must be loaded:



▼ User Set Control	
1 ▼ UserSetSelector	Default User Set
2 UserSetLoad	(command)
UserSetSave	(command)
User Set Default	Default User Set

Afterwards this factory default user set must be saved again as user set (in the example below, user set 2 is overwritten with the factory settings).



▼ User Set Control	
▼ UserSetSelector	User Set 2
UserSetLoad	(command)
UserSetSave	(command)
User Set Default	User Set 5

## 5.3 I/O Features

The SVCam cameras are equipped with several inputs and outputs, providing state-of-the-art control regarding input and output channels. All I/O functions are realized as modules. These functions can be connected in the GenICam tree.

### 5.3.1

## Pulse width modulation

During pulse width modulation (PWM), a duty cycle is modulated by a fixed frequency square wave. This describes the ratio of ON to OFF as duty factor or duty ratio.

### WHY PWM?

Pulse width modulation is an extremely efficient way (in terms of power dissipation) to provide or regulate electrical power to consumers as long as they do not need uninterrupted supply (such as diodes or LEDs). The interruption times might be as short as nano seconds.

### LED CHARACTERISTICS

Since LEDs have a bounded workspace, the PWM ensures a variable intensity of illumination at a constant current on the diodes. The constant current guarantees a linear light emission response curve of the LED from 0-100% PWM intensity.

Running LED lighting in flash mode will increase LED lifetime because of reduced LED heat dissipation.

### IMPLEMENTATION OF PWM

The basic frequency of the modulation is defined by the cycle duration "T".

$$T_{PWM} = \frac{1}{f_{PWM}}$$

Duty cycle "T" is written into the registry by multiple of the inverse of camera frequency in 15 ns steps.

$$T_{PWM} = \frac{1}{66,6\text{ MHz}} \bullet PWMMax[SeqSelector] = 15\text{ ns} \bullet PWMMax[SeqSelector]$$

### THE INTENSITY OF A PWM

The duty ratio is calculated as:  $\Delta\% = t / T$ . It is written above the value of "t" as PWMChange0-3[SeqSelector] per sequence into the registry.

PWMChange0-3[SeqSelector] unit is percentage value.

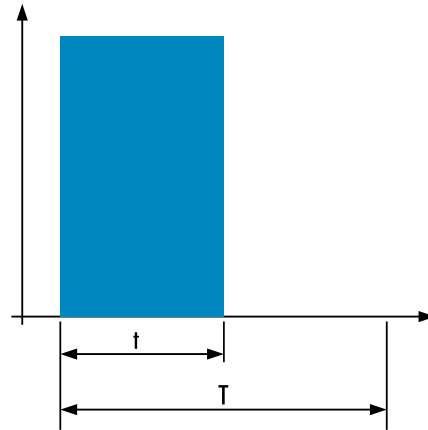


Fig. 5-36: PWM intensity

### EXAMPLES OF PWMS

The integrals over both periods  $T_A$  and  $T_B$  are equal.

$$\int_{t_{A1}}^{t_{A2}} \mathbf{A} = \int_{t_{B1}}^{t_{B2}} \mathbf{B}$$

An equal amount of Photons will be emitted. The intensity of light is the same.

$$t_{A2} - t_{A1} = t_{B2} - t_{B1}$$

The periods  $T_A$  and  $T_B$  are equal in length.

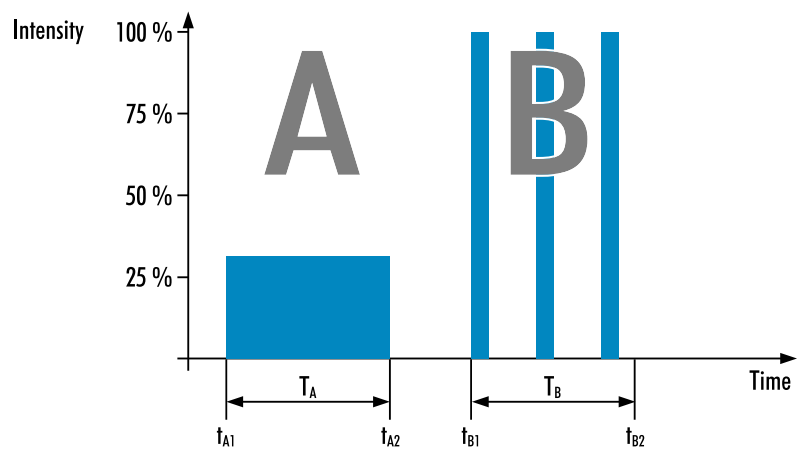


Fig. 5-37: Example: 25% PWM load

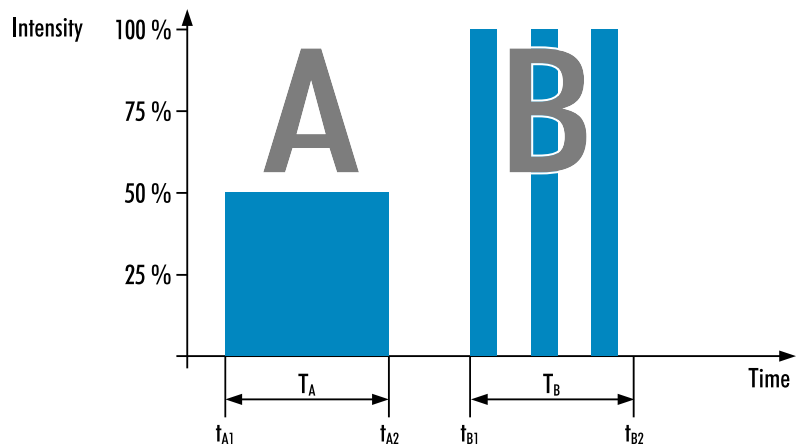


Fig. 5-38: Example: 50% PWM load

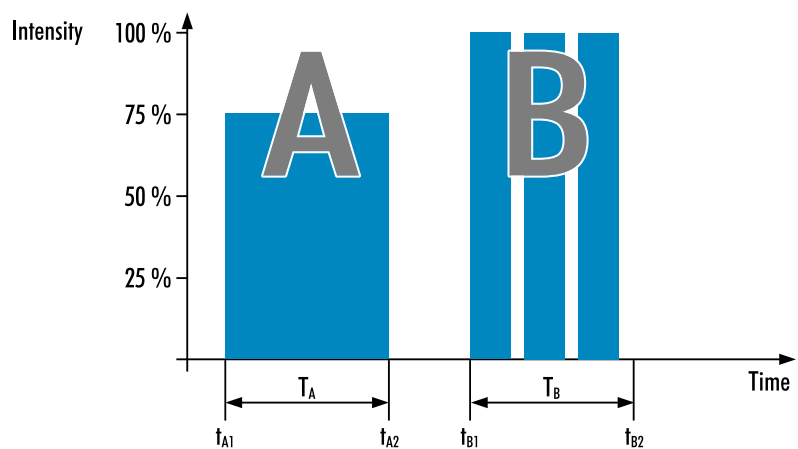


Fig. 5-39: Example: 75% PWM load

## THE PWM MODULE

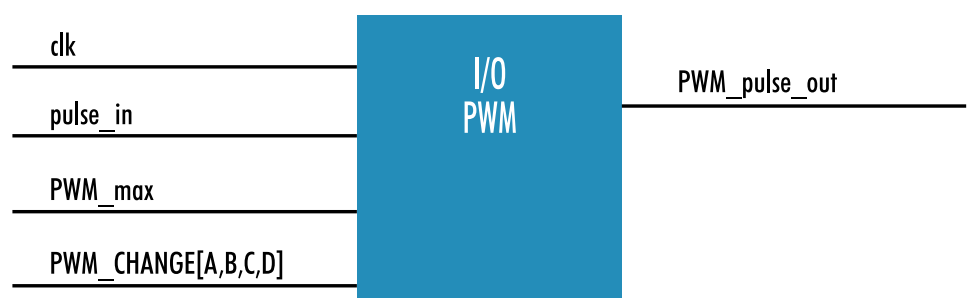


Fig. 5-40: The PWM module

### 5.3.2

### LED strobe control

The SVCam 4I/O concept contains an integrated strobe controller. Its controls are integrated into the GenICam tree. With LED lights attached to the outputs, this enables the user to control the light without external devices. Being controlled via GenICam, any GenICam-compliant 3<sup>rd</sup> party software is able to control the light as well. Maximum ON-time is 100 ms. Depending on the camera

model, up to four (see specifications) independent channels are supported with a max current of 3A@40 ms per 1 s (or 4 %). Maximum continuous current is 0.3 A. Despite internal protections, higher current peaks might be able to damage the camera.

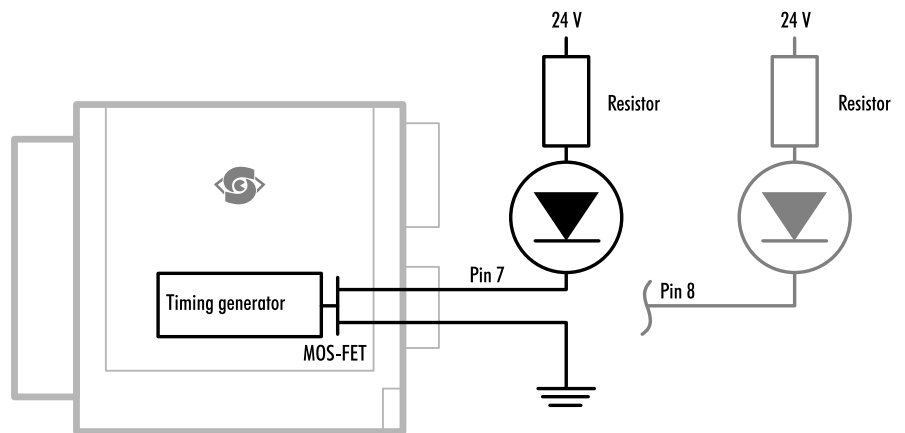


Fig. 5-41: Attach LED lights to camera outputs

To avoid destruction of your LED light or camera, make sure to use the right dimension of shunt resistor.

## STROBE POLARITY

Positive or negative polarity of the hardware strobe output can be selected.

## STROBE DURATION

The exposure time of LED lights can be set in tics. The min duration is 1  $\mu$ s. The longest time is 1 second.

## STROBE DELAY

The delay between the (logical) positive edge of trigger pulse and strobe pulse output.

## EXPOSURE DELAY

A tic value, representing the time between the (logical) positive edge of trigger pulse and start of integration time.

## CALCULATE LED SHUNT RESISTORS

Shunt resistors are used to limit the LED current. Make sure, neither shunt nor LED run above specs.



## LEDS IN CONTINUOUS MODE

Specification	Value
Voltage drop al 5 LEDs, 2,2V per LED (see spec. of LED)	11 V
Max. continuous current (see spec. of LED)	250 mA
Voltage supply	24 V
Voltage drop at resistor (24 V – 11 V)	13 V
Pull up Resistor $R = \frac{13\text{ V}}{250\text{ mA}}$	52 $\Omega$

Table: 5-3: LEDs in continuous mode

Specification	Value
Total power ( $P = U \times I$ )	6 W
Power at LEDs ( $11\text{ V} \times 250\text{ mA}$ )	2,75 W
Power loss at resistor ( $13\text{ V} \times 250\text{ mA}$ )	3,25 W

Table: 5-4: Example Calculation "No Flash" (CW Mode)

## LEDS IN FLASH MODE

Most LED lights can cope with currents higher than specs. This gives you higher light output when light is ON. Refer to your LED specs if LED overdrive is permitted.

By controlling the duty cycle the intensity of light and current can be controlled. See sequencer example how to adjust the values in the GenICam tree for strobe control.

The shorter the „time on“ – the higher current can be used when driving LEDs with current higher than spec

Make sure your PWM lighting frequency is at least double or triple the bit-depth of your image (e.g. 8 bit image = 256, this means your PWM has to be switched at least  $256 \times 2 = 512$  times) while exposing. If exposure time is 5 ms, the required minimum PWM freq =  $5\text{ ms} / 512 \sim 10\text{ }\mu\text{s} \sim 100\text{ kHz}$ .

## STROBE VOCABULARY

For an example how to enable and adjust the integrated strobe controller refer to sequencer (see ["Sequencer" on page 74](#)). Times and frequencies are set in tics. 1 tic = 15 ns.

## EXPOSURE DELAY

A tic value, representing the time between the (logical) positive edge of trigger pulse and start of integration time.

## STROBE POLARITY

Positive or negative polarity of the hardware strobe output can be selected.

## STROBE DURATION

The exposure time of LED lights can be set in tics. The min duration is 1  $\mu$ s. The longest time is 1 second.

## STROBE DELAY

The delay between the (logical) positive edge of trigger pulse and strobe pulse output.

### 5.3.3

## Sequencer

The sequencer is used when different exposure settings and illuminations are needed in a row.

Values to set	Description
Sequencer interval	Duration of the interval
Exposure start	Exposure delay after interval start
Exposure stop	Exposure stop related to interval Start
Strobe start	Strobe delay after interval start
Strobe stop	Strobe stop related to interval Start
PWM frequency	Basic duty cycle ( 1 / Hz ) for PWM
PWM change	Demodulation results

In the current GenICam implementation, all values have to be entered in tic values.

*1 tic = 15 ns*

Every adjustment (times, frequencies) has to be recalculated into tics and done in tics. See the example below.

When setting "Exposure Start" and "Stop" consider 'read-out-time' of the sensor. It has to be within the Sequencer interval.

For physical input and output connections refer to pin-out or specifications or see example below. After trigger signal all programmed intervals will start. Up to 16 intervals can be programmed.

Sequencer settings can be saved to camera EEPROM.

## EXAMPLE

### SCENARIO

An object should be inspected with a monochrome camera. For accentuating different aspects of the image, 4 images should be taken in a row with 4 different colors of light: red, green, blue, white. White light should be generated from the RGB lights being activated at the same time. Basis is a dark environment without other light sources.

### CAMERA WIRING

- 3 LED lights are physically connected to the camera on out 0-2 (red, green, blue)
- Out 3 is not used

### I/O MATRIX

- 4 images to be taken (RGBW) result in 4 sequences
- RGB PWM change with different intensities (duty cycle) taking care for differences in spectral response of the camera sensor
- PWM change 0-2 is connected to out 0-2
- Seq pulse A is driving the exposure (trigger)
- Seq pulse B is driving the strobe
- Seq pulse B in WHITE sequence is reduced down to 33% as light intensities of 3 lights (RGB) will add up

### NOTES

- Different exposure / strobe timings are used for illustration. In most cases they will show values same as exposure
- The resulting exposure time shows the period of sensor light exposure. ("masking" of exposure time by creating strobe light impulses shorter than exposure time). This value is not adjustable at the camera

- PWM change is shown with reduced height for demonstrating reduced intensity. In reality though, PWM change will be full height (full voltage, shunt resistor might be necessary) with the adjusted duty cycle
- Use a PWM frequency high enough not to interfere with your timings (here: 1000 Hz)

Scenario values	Interval 0 (RED)	Interval 1 (GREEN)	Interval 2 (BLUE)	Interval 3 (WHITE)
Sequencer Interval	1000 ms	1000 ms	1000 ms	1000 ms
Seq pulse A start	0 ms	0 ms	100 ms	0 ms
Seq pulse A stop	100 ms	300 ms	300 ms	100 ms
Seq pulse B start	0 ms	100 ms	200 ms	0 ms
Seq pulse B stop	100 ms	200 ms	300 ms	33 ms
PWM Frequency f	1000 Hz	1000 Hz	1000 Hz	1000 Hz
PWM change 0 (RED)	100%	0%	0%	100%
PWM change 1 (GREEN)	0%	70%	0%	70%
PWM change 2 (BLUE)	0%	0%	80%	80%
PWM change 3	-	-	-	-

As stated before, all these values have to be entered into the camera's GenICam tree as tic values.

The timing values translate like this into tics:

Values to set in GenICam properties	Interval 0 (RED)	Interval 1 (GREEN)	Interval 2 (BLUE)	Interval 3 (WHITE)
Sequencer Interval	6666667 tic (1000 ms)	6666667 tic (1000 ms)	6666667 tic (1000 ms)	6666667 tic (1000 ms)
Seq pulse A start	0 tic (0 ms)	0 tic (0 ms)	666667 tic (100 ms)	0 tic (0 ms)
Seq pulse A stop	666667 tic (100 ms)	20000000 tic (300 ms)	20000000 tic (300 ms)	666667 tic (100 ms)
Seq pulse B start	0 tic (0 ms)	666667 tic (100 ms)	13333333 tic (200 ms)	0 tic (0 ms)
Seq pulse B stop	666667 tic (100 ms)	13333333 tic (200 ms)	20000000 tic (300 ms)	2200000 tic (33 ms)
Effective exposure time	100 ms	100 ms	100 ms	33 ms
PWM Frequency f	66667 tic (1000 Hz)	66667 tic (1000 Hz)	66667 tic (1000 Hz)	66667 tic (1000 Hz)

Values to set in GenICam properties	Interval 0 (RED)	Interval 1 (GREEN)	Interval 2 (BLUE)	Interval 3 (WHITE)
PWM change 0 (RED)	66667 tic (100% of 1000 Hz)	0 tic	0 tic	66667 tic (100% of 1000 Hz)
PWM change 1 (GREEN)	0 tic	46667 tic (70% of 1000 Hz)	0 tic	46667 tic (70% of 1000 Hz)
PWM change 2 (BLUE)	0 tic	0 tic	53333 tic (80% of 1000 Hz)	53333 tic (80% of 1000 Hz)
PWM change 3	-	-	-	-

In a timings diagram, the sequence values above will look like the following diagram:

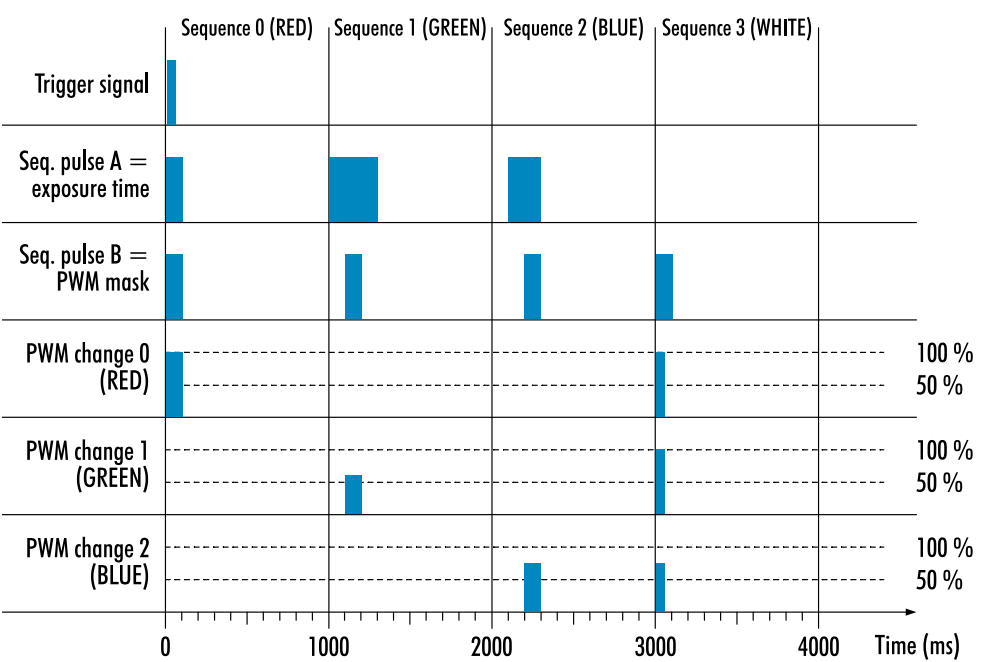


Fig. 5-42: Sequencer timing diagram

### 5.3.4 Optical input

In many trigger signals you find noise, transients and voltage spikes. These are able to damage components in the camera and trigger signal interpretation might be difficult.

An optical input separates the electrical trigger and camera circuits. The benefit of such an optical input is to avoid all these kinds of interaction from power sources or switches. The disadvantage of an optical input is that it is slower in terms of signal transmission and slew rate than a direct electrical connection.

If you need super fast response from the camera, direct electrical access is your choice. If your camera trigger is in the ms range or slower, we recommend to use the optical input.

An optical input needs some current for operation. The Allied Vision optical input is specified to 5-24 V, 8 mA.

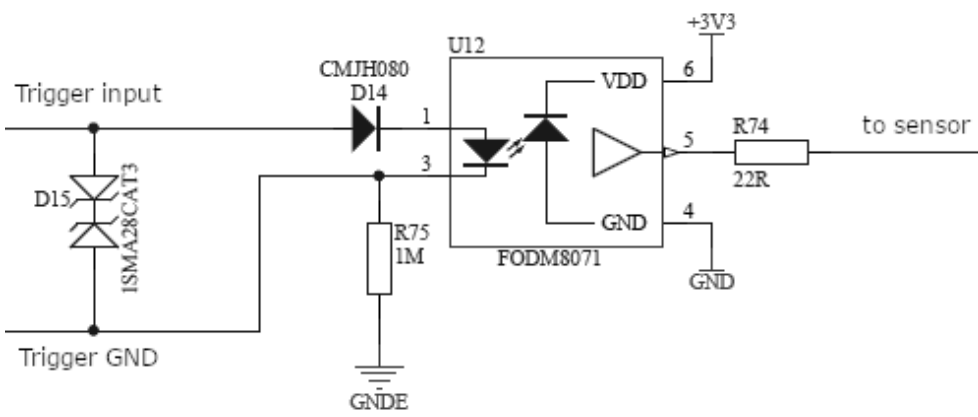


Fig. 5-43: Optical input

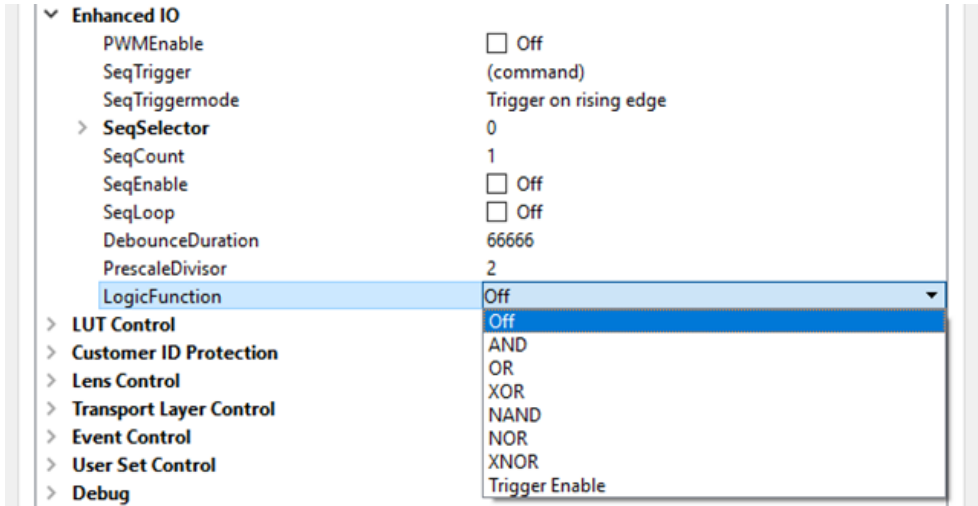
The optocoupler galvanically separates electrical circuits by emitting light on one side and interpreting light in the other. There is no direct electric interaction between both electrical circuits.

### 5.3.5

### PLC / Logical operation on inputs

The logic input combines trigger signals with Boolean algorithms. The camera provides AND, NAND, OR, NOR, XOR, XNOR as below. You might combine combine true or false states of the inputs to determine camera actions. The result can be connected to a camera trigger signal or it may be source for the next logical operation with another input. It is possible to connect it to an OUT line as well.

### GENICAM TREE SETTING



The logic function always combines the values of Digital IO InputA / LogicA and InputB / LogicB. In case of the trigger enabled logic function, LogicB is the trigger enable signal and will be combined with LogicA value.

AND	NAND	OR	NOR	XOR	XNOR
A B Y	A B Y	A B Y	A B Y	A B Y	A B Y
0 0 0	0 0 1	0 0 0	0 0 1	0 0 0	0 0 1
0 1 0	0 1 1	0 1 1	0 1 0	0 1 1	0 1 0
1 0 0	1 0 1	1 0 1	1 0 0	1 0 1	1 0 0
1 1 1	1 1 0	1 1 1	1 1 0	1 1 0	1 1 1

Table: 5-5: Truth table of logic function

Expert view of the GenICam tree has to be activated to see logic functions.

### 5.3.6

## Serial data interfaces

(ANSI EIA/) TIA-232-F

RS-232 and RS-422 (from EIA, read as Radio Sector or commonly as Recommended Standard) are technical standards to specify electrical characteristics of digital signaling circuits. Serial connection might be used to control SVCams. These signals are used to send low-power data signals to control exposure, light or lenses (MFT). Usage scenario is a control possibility without network. Be aware of low connection speed.

Serial interface parameter	RS-232	RS-422
Maximum open-circuit voltage	±25 V	±6 V
Max differential voltage	25 V	10 V
Min. signal range	±3 V	2 V
Max. signal range	±15V	10 V

Table: 5-6: Serial interface parameters – RS-232 and RS-422

See your camera data sheet regarding its serial capabilities.

Data transport is always asynchronous. Synchronization is implemented by fist and last bit of a package. Data rate (bits per second) must be defined before transmission.

## RS232

RS232 is split into 2 lines receiving and transferring data.

- RXD: receive data
- TXD: transmit data

Signal voltage values are:

- Low: -3 ... -15 V
- High: +3 ... +15 V

For restrictions, refer to table of serial interface parameter above.

Packaging data into containers (adding start and stop bits) is implemented by the UART (Universal Asynchronous Receiver Transmitter).

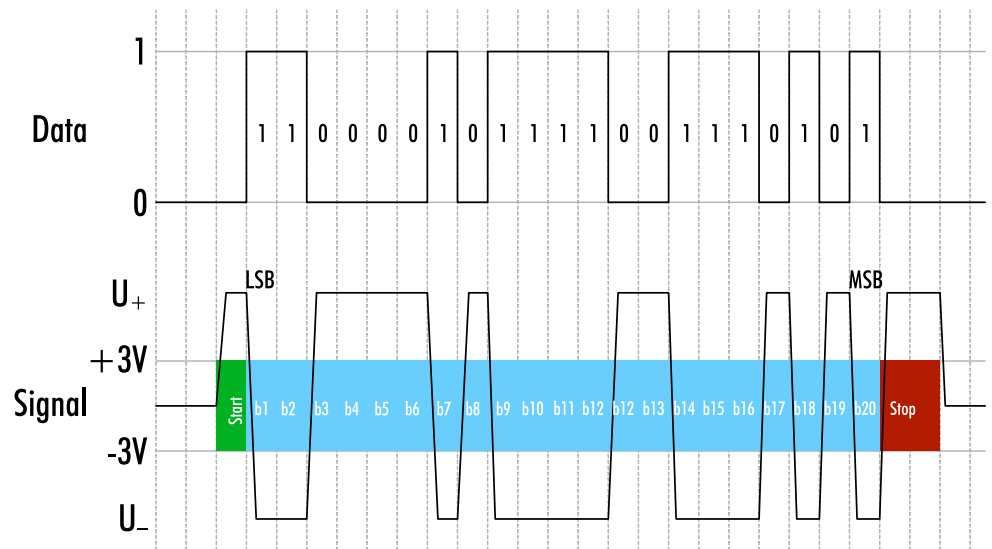


Fig. 5-44: UART encoding of a data stream



### 5.3.7

### Trigger-edge sensitivity

Trigger-edge sensitivity is implemented by a “Schmitt trigger”. Instead of triggering to a certain value, the Schmitt trigger provides a threshold.

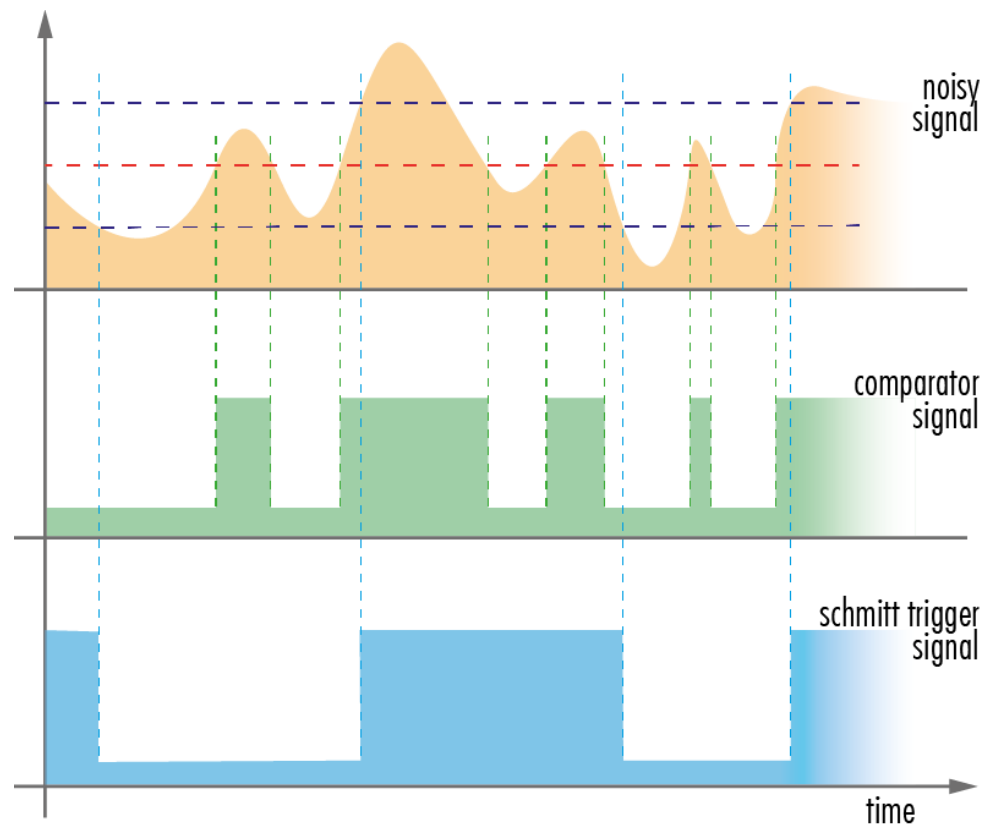


Fig. 5-45: Schmitt trigger noise suppression

### 5.3.8

## Debouncing trigger signals

Bounces or glitches caused by a switch can be avoided by software within SVCam.

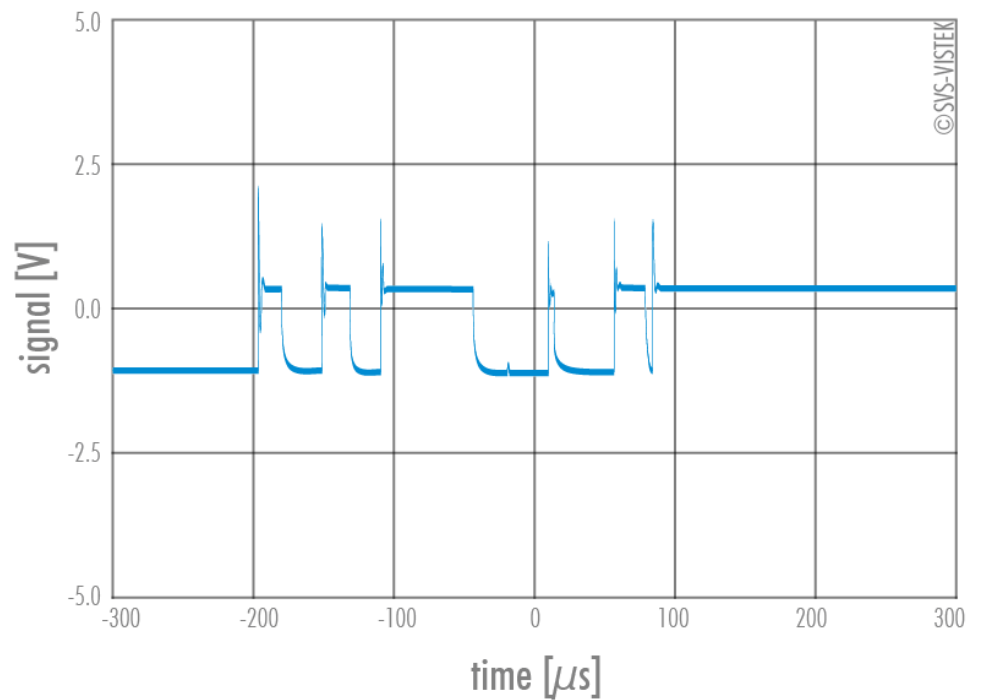


Fig. 5-46: Bounces or glitches caused by a switch

Therefore the signal will not be accepted until it lasts at least a certain time.

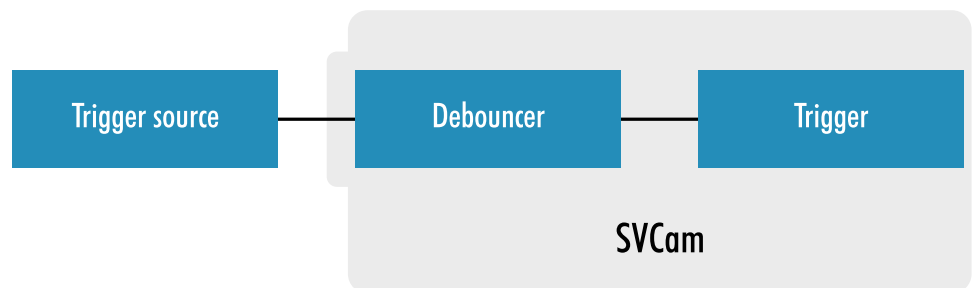
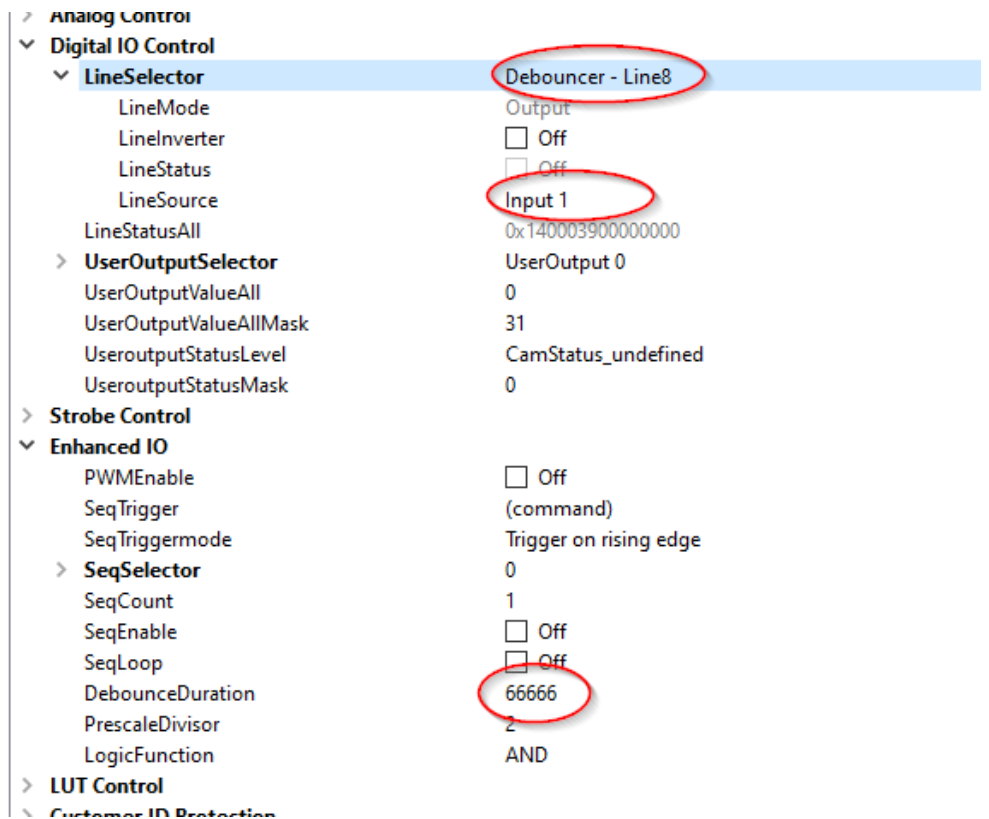


Fig. 5-47: Debouncer between the trigger source and trigger



1. Use the IO Assignment tool to place and enable the debouncer module in between the “trigger” (Schmitt trigger) and the input source (e.g.: line 1).
2. Set the register “DebounceDuration” in multiples of 15 ns (implementation of system clock), e.g. 66 666  $\approx$  1 ms.

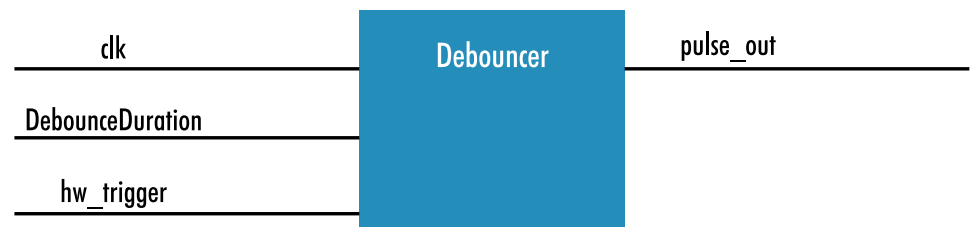


Fig. 5-48: The debouncer module

### 5.3.9

### Prescale

The prescale function can be used for masking off input pulses by applying a divisor with a 4-bit word, resulting in 16 unique settings.

- Reducing count of interpreted trigger signal
- Use the prescale function to ignore a certain count of trigger signals.
- Divide the amount of trigger signals by setting a divisor.
- Maximum value for prescale divisor: is 16 (4 bit)

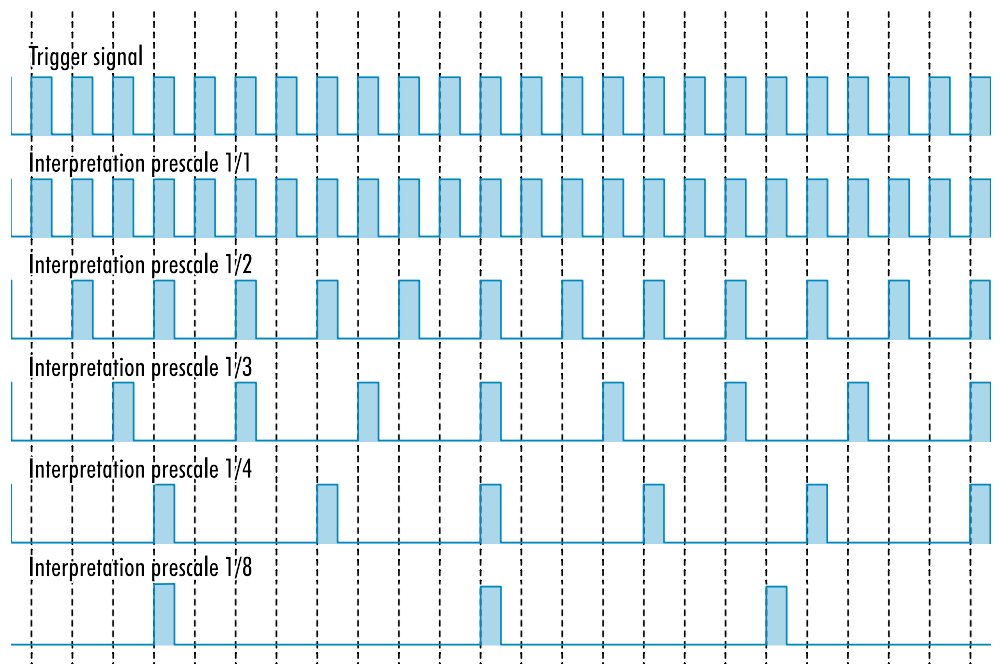


Fig. 5-49: Prescale values and their result on trigger signal

## THE PRESCALE MODULE



Fig. 5-50: The prescale module

# Annex

## 6.1 Dimensions

All length units in mm.

Find the technical drawings in the web download area at [Documents and downloads - Technical documentation](#)

## 6.2 I/O driver circuit schematics

Camera power supply and power supply for PWM out is 25V max., both being camera outputs.

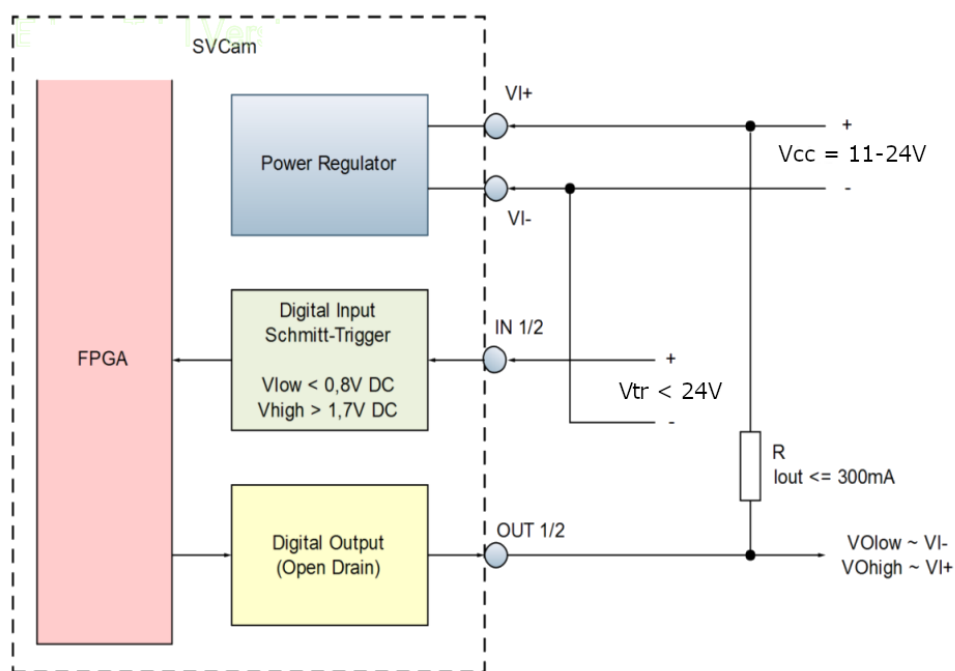


Fig. 6-1: I/O driver circuit schematics

## 6.3 Action commands

Action commands are dedicated Ethernet packets used as external so called "Trigger over Ethernet" (ToE). The trigger can be sent to one camera as uni-cast or to all cameras as broadcast.

Each action command contains the following values:

- **DeviceKey** to authorize the action on this device.
- **GroupKey** to define a group of devices on which actions have to be executed.
- **GroupMask** to be used to filter out some of these devices from the group.

All these values can be set here:



Fig. 6-2: Action control

To fire a trigger in the camera, the DeviceKey and the GroupKey have to match and at least one bit in the GroupMask has to match.

Here are some examples of the GroupMask:

Sent GroupMask	Camera GroupMask	Camera reaction
0x7FFF FFFF	0x0000 0001	YES
0x0000 000E	0x0000 0001	NO
0x0000 FFFF	0x0000 005F	YES
0x0000 FFFF	0x0000 0800	YES
0x0000 FFFF	0x0f11 0000	NO

Table: 6-1: Examples of GroupMask

Here are some examples of action commands "ActionCMD" and the reaction of three cameras receiving these commands:

ActionCMD	Device0	Device1	Device2
DeviceKey	0xaffe	0xaffe	0xaffe
GroupKey	0x1234	0x1234	0x1234
GroupMask	0x0002	0x0003	0x0001

ActionCMD		Device0		Device1	Device2
		invalid	valid	valid	invalid
				invalid	invalid
DeviceKey	0xaffe	0xaffe		0xaffe	0xaffe
GroupKey	0x0001	0x1	0x1234	0x1234	0x1234
GroupMask	1-65535	0xffff	0xffff	0xffff	0xffff
		valid	invalid	invalid	valid
				valid	invalid

Table: 6-2: Example of action command

A short Python program example to generate an action command. The IP address of "server.bind" shall be adapted to the IP address of the local network card.

```

1 import socket import time
2 from struct import *
3 server = socket.socket(socket.AF_INET, socket.SOCK_DGRAM, socket.IPPROTO_UDP)
4 server.setsockopt(socket.SOL_SOCKET, socket.SO_REUSEADDR, 1)
5 # Enable broadcasting mode server.setsockopt(socket.SOL_SOCKET, socket.SO_
6 BROADCAST, 1) server.settimeout(0.2)
7 # use local address to bind socket server.bind(("169.254.191.50", 44444))
8 #message = b"your very important message" # net8 id;
9 #net8 flag; #net16 command; #net16 length; #net16 req_id; #net32 device_key;
10 #net32 group_key; #net32 group_mask;
11 # gv_cmd_action;
12 # action ack request
13 # id flag command length req_id device_key group_key
14 group_mask
15 message = pack("!BBhhhlll", 0x42, 0x01, 0x0100, 12, 5, 1, 1, 1)
16 # without action ack request
17 #message = pack("!BBhhhlll", 0x42, 0x00, 0x0100, 12, 5, 1, 1, 1)
18 while True:
19 server.sendto(message, ('<broadcast>', 3956))
20 #server.sendto(message, ("169.254.185.58", 3956))
21 print(".") time.sleep(1/40)

```

Generating an action command

The time between receiving an action command and releasing the trigger was measured with maximum load and values between 25605 ns and 50130 ns.

## 6.4 FAQ

For questions and issues, refer to the FAQ page on our website: [FAQs and application notes](#)



Allied Vision Gilching GmbH

Ferdinand-Porsche-Str. 3

82205 Gilching

Phone: +49 8105 3987-60

[www.alliedvision.com](http://www.alliedvision.com)

[info@alliedvision.com](mailto:info@alliedvision.com)

© January, 2026